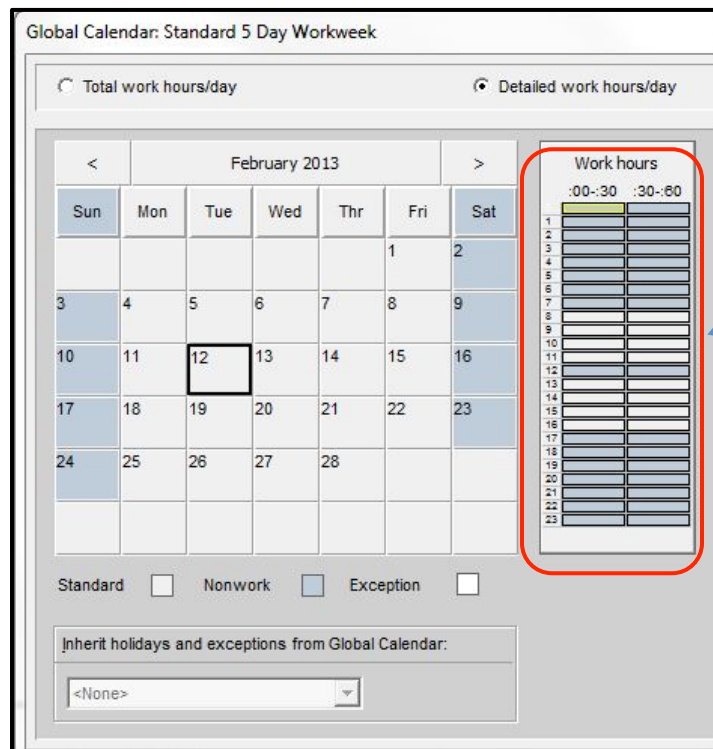


# TECH TIP

## TURNING ON TIME ORACLE PRIMAVERA P6 PROFESSIONAL

When scheduling in Primavera P6, it is important to "Turn on time" when adding new activities to the project. The reason for this is Primavera will start the activity at 12:00 am and not the actual calendar time of day specified for the activity to begin on. In some cases where logic is present, there is no issue. This can lessen the integrity of the schedule's accuracy by causing issues within actual schedule dates and durations on specific activities.

To avoid any "Unknowns" from happening, we recommend as a best practice "Turning on time" to resolve this issue.



Standard Work Time  
of 8 Hours per day;  
in half-hour  
increments

Figure 1 - Standard 5 Day Calendar - Starts at 8:00AM

# TURNING ON TIME

Activity ID	Activity Name	Original Duration	Start	Finish	Actual Start	Actual Finish	Calendar	Total Float
(New Project)		1d	12-Feb-13 12:00 AM	12-Feb-13 05:00 PM			Standard 5 Day Workweek	0d
A1000	Office Building Addition Kickoff	0d	12-Feb-13 08:00 AM				Standard 5 Day Workweek	
A1010	New Activity	1	12-Feb-13 12:00 AM	12-Feb-13 05:00 PM			Standard 5 Day Workweek	

Figure 2 - Added Activity shows "Start at 12:00 AM" when calendar specifies 8:00AM

Avoid applying an actual start on these activities until the correct "Start Time" has been corrected.

Turn on time by Selecting "Edit" and scroll to "User Preferences"

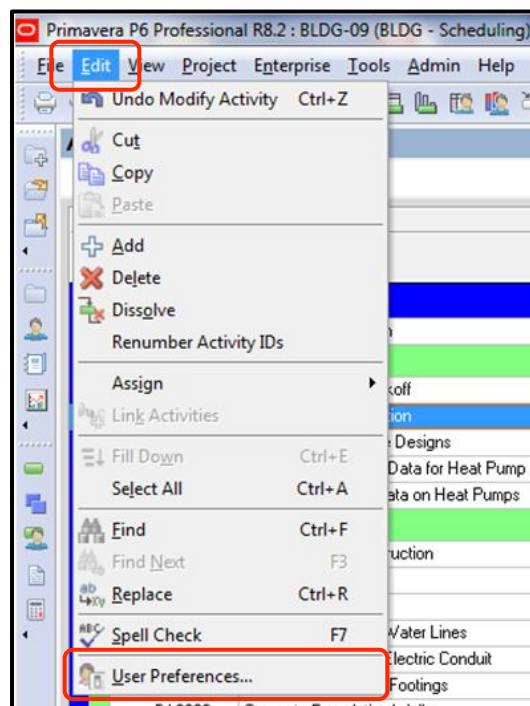


Figure 3 - Edit; User Preferences

## TURNING ON TIME

Select the "Dates" tab; Choose "12 hour (1:30PM)" and select "Show Minutes". Verify by looking at the sample.

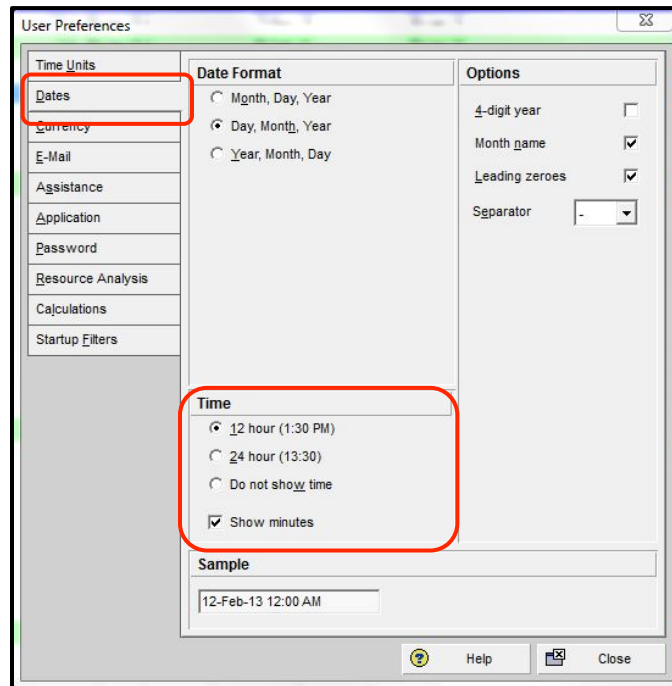


Figure 4 - Dates Tab; Turning on time to show minutes