

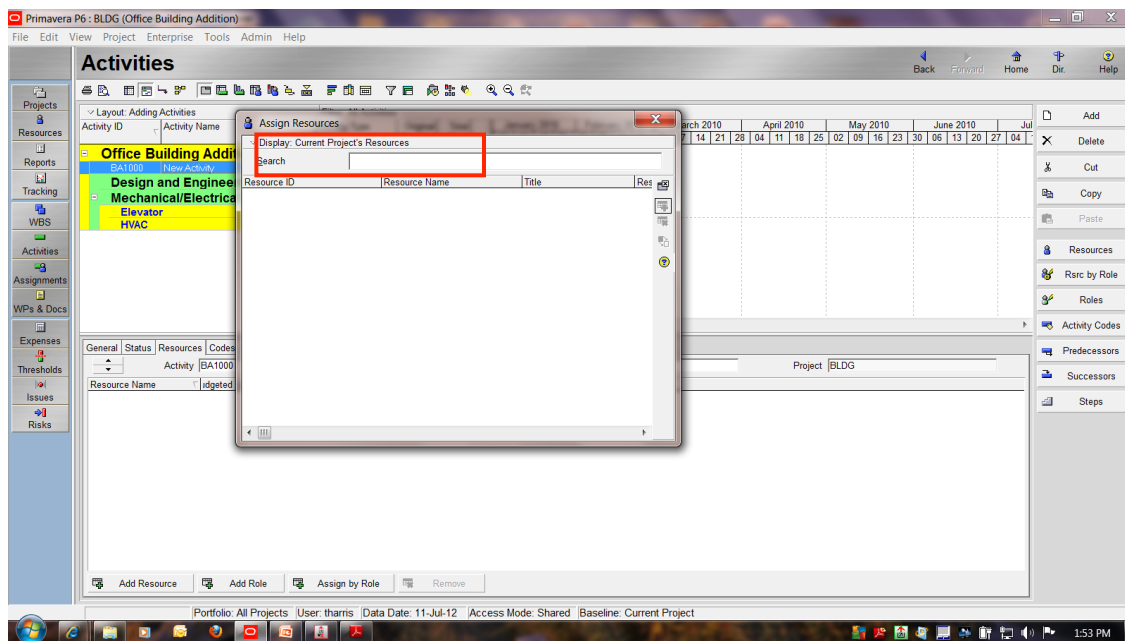
TECH TIP

START UP FILTERS IN P6 ORACLE PRIMAVERA P6

Startup Filters have settings for Resources, Roles, OBS, Activity Codes as well as Cost Accounts. These filters can be used to display data from currently opened projects only or user can set to view all data which will include all projects in the Enterprise.

1. Open Project(s).
2. Click on Activity.

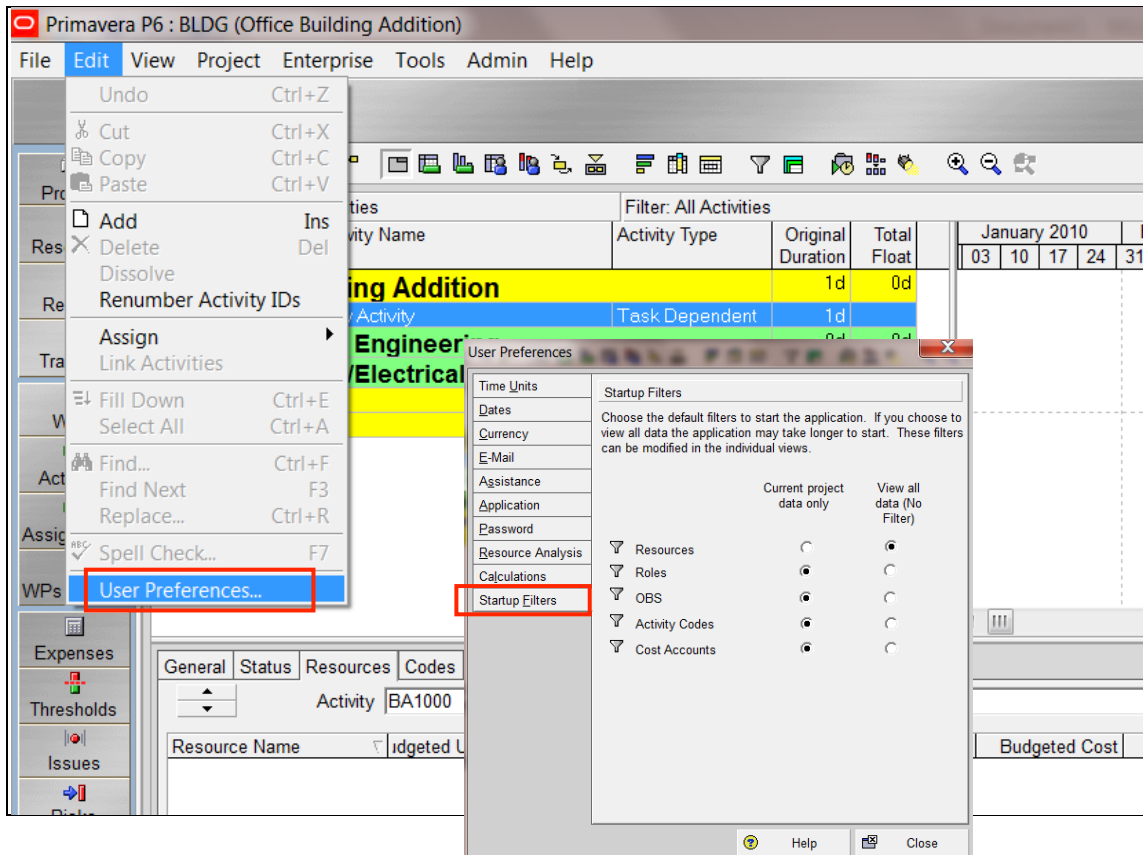
3. Select  Add Resource.



START UP FILTERS IN P6

If Assign Resources is blank note the "Display". Display will state what the Startup Filter is set to. In this case it is set at Current Project's Resources.
To access Resources for all projects change the filter.

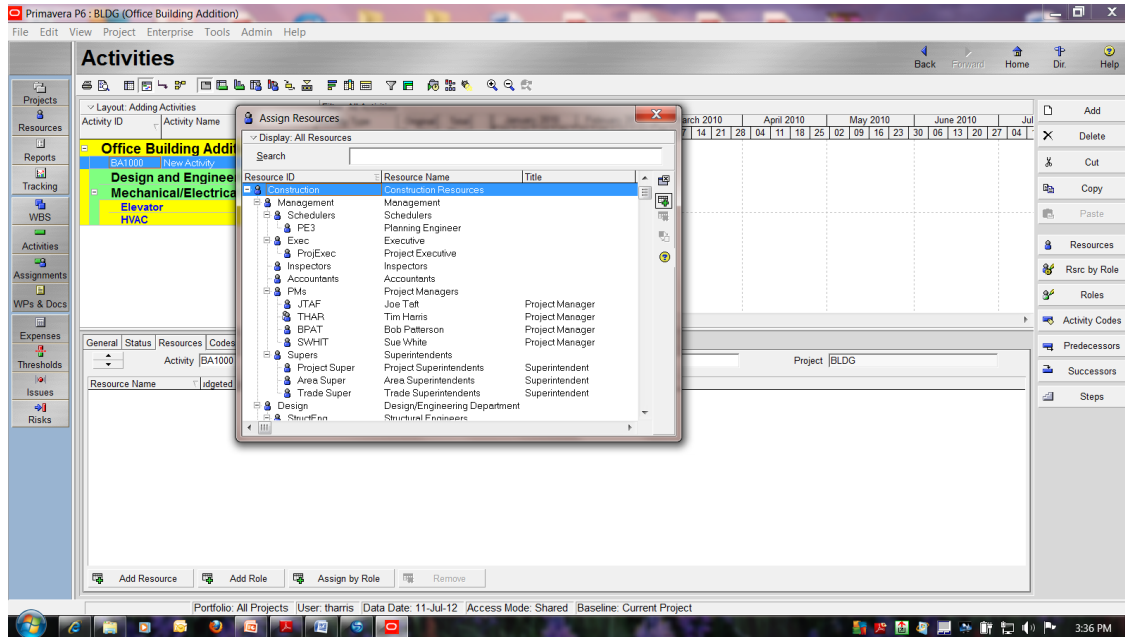
1. From the Edit Menu select User Preferences.



2. Change the Resources to View All.
3. Click Close.

START UP FILTERS IN P6

4. Close Project and Log Out. Log back in to reflect change.



Resources are now available.