

# Acumen in 2017

**Deltek** Know more.  
Do more.™

## Discussion and Demonstration

Tom Polen

Deltek, Director, Solution Architecture

# Deltek Acumen

## Accurate and Reliable Project Planning

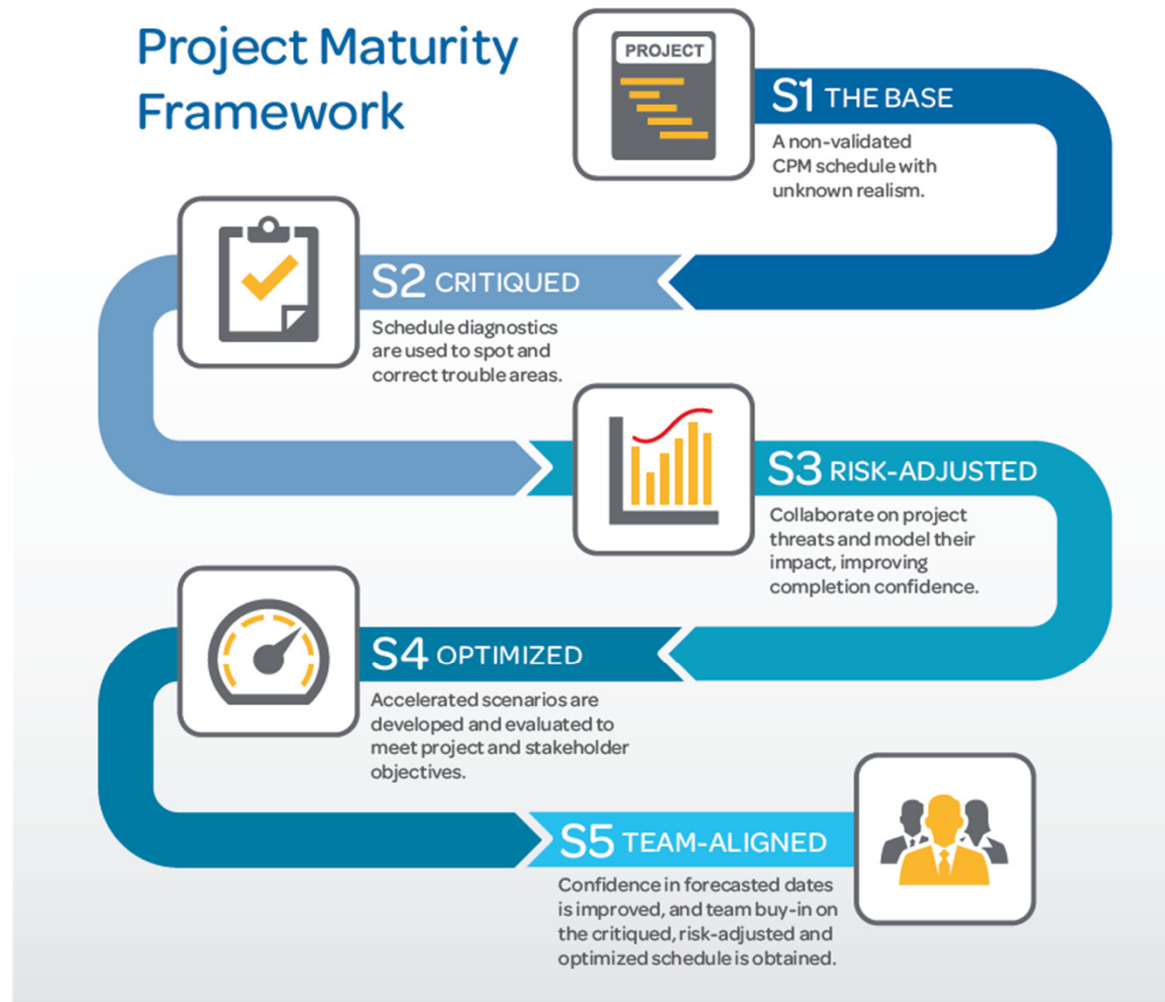
- **Accurate** project forecasting
- **Reduced** capital risk exposure
- **Actionable** program insight & control
- **Successful** projects and project managers

A **sound** schedule is the key to project success

An **accurate forecast** requires consideration of risk.

An efficient project team depends on thorough insight.

# Project Maturity Framework



# New Features and Benefits

- **DCMA Data Driven Metrics Functionality**
  - Provides the ability to define and evaluate the DCMA metrics at the Control Account and Work Package level
- **Analysis and Reporting**
  - Improvements in Forensics comparison of schedules
  - New Risk Executive Briefing report
- **Updated PPM User Interface**
  - Include new PPM color scheme and updated icons

# What is EVAS and Data Driven EVM?

- EV Analytics System

- Currently 132 metrics  
Comparing:

- IMS
- Cost System
- WAD

It is in use today by  
in pilots and by the NAVY



## BBP 3.0 DCMA EVMS Action Items

- FY2015 USD(AT&L) Study: Eliminating Requirements Imposed on Industry where Costs Outweigh Benefits Identified a Number of DCMA EVMS Mission Areas for Improvement
- Key Initiatives - BBP 3.0 Eliminate Unproductive Processes and Bureaucracy Actions:
  - ***3.5.4.6: DCMA will expand “Data-Driven EVM Systems Streamlining Pilot” to conduct streamlined compliance reviews and system surveillance at three additional contractor facilities by October 2015***
  - ***3.5.4.7: DCMA will provide an actionable plan to assess the benefits of streamlining its EVMS operations and centralizing its EVMS competency to improve consistency of EVMS implementation by Sept. 2015***

# Reporting

**Deltek** Know more.  
Do more.™



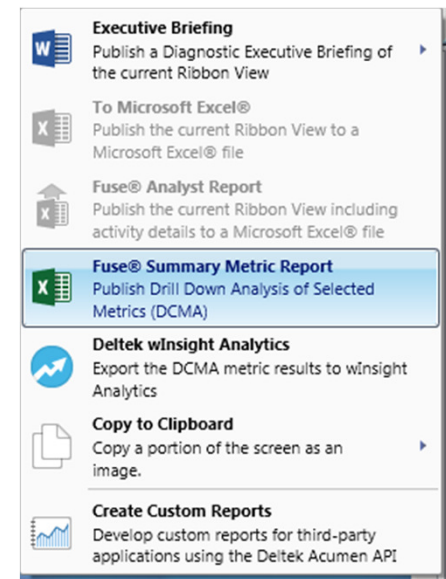


# Reporting

- New Summary Metric Report
- New Risk Executive Briefing
- wInsight integration of analytics for enterprise view

# Reporting - New Summary Metric Report

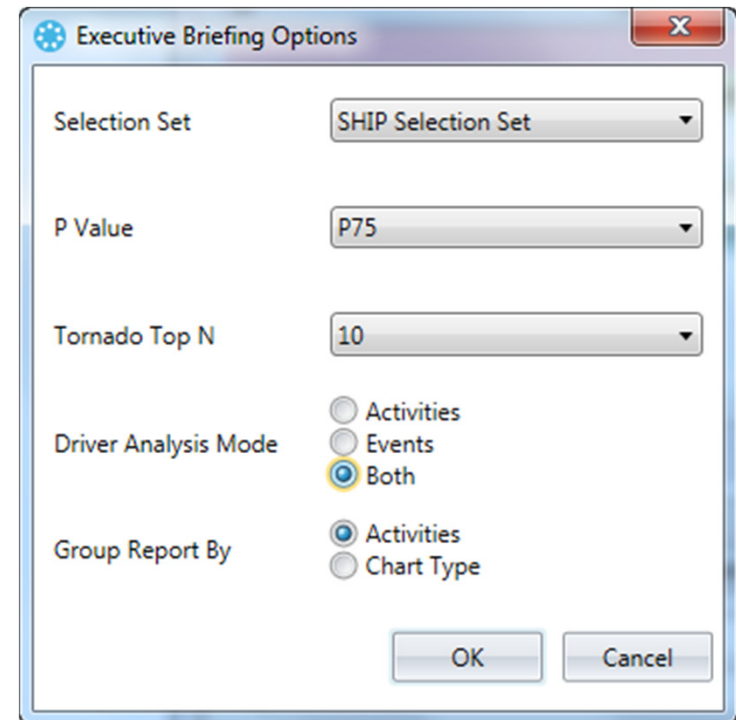
- The new Summary Metric Report is like the Analyst Report on steroids. It includes:
  - All Ribbon Views containing metrics with the new Publish flag set to true
  - Each ribbon view is summarized by showing the Score to a program summary tab.
  - Intermediate levels of Metric Folders are also summarized
- You don't need to select one of the ribbon views before you publish...  
we fuse what we need
- New Publish option on metrics





# Reporting - New Risk Executive Briefing

- S3 Publish has New Risk Executive Briefing
- You define a Selection Set of the activities or milestones you want to report on.
- Options for:
  - P value for analysis
  - # of bars in Tornado
  - Tornadoes to include Events, Activities or Both
- Group Report by
  - Activities (all charts for an activity together)
  - Chart Type (all event tornados together)



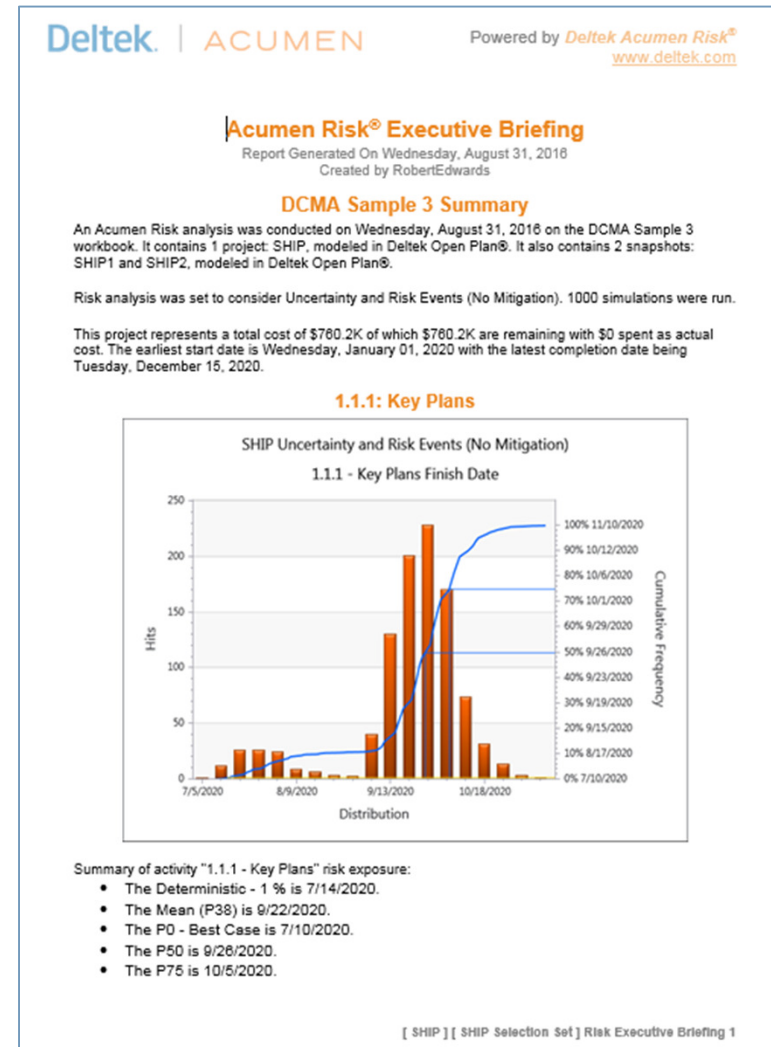
The screenshot shows a dialog box titled "Executive Briefing Options" with a close button (X) in the top right corner. The dialog contains several configuration options:

- Selection Set:** A dropdown menu currently showing "SHIP Selection Set".
- P Value:** A dropdown menu currently showing "P75".
- Tornado Top N:** A dropdown menu currently showing "10".
- Driver Analysis Mode:** Three radio button options: "Activities", "Events", and "Both". The "Both" option is selected.
- Group Report By:** Two radio button options: "Activities" and "Chart Type". The "Activities" option is selected.

At the bottom right of the dialog are two buttons: "OK" and "Cancel".

# Reporting – New Risk Executive Briefing

- Based on a template like the Fuse Executive Briefing
- Selection Sets can be used across projects to get the same milestones in each report.



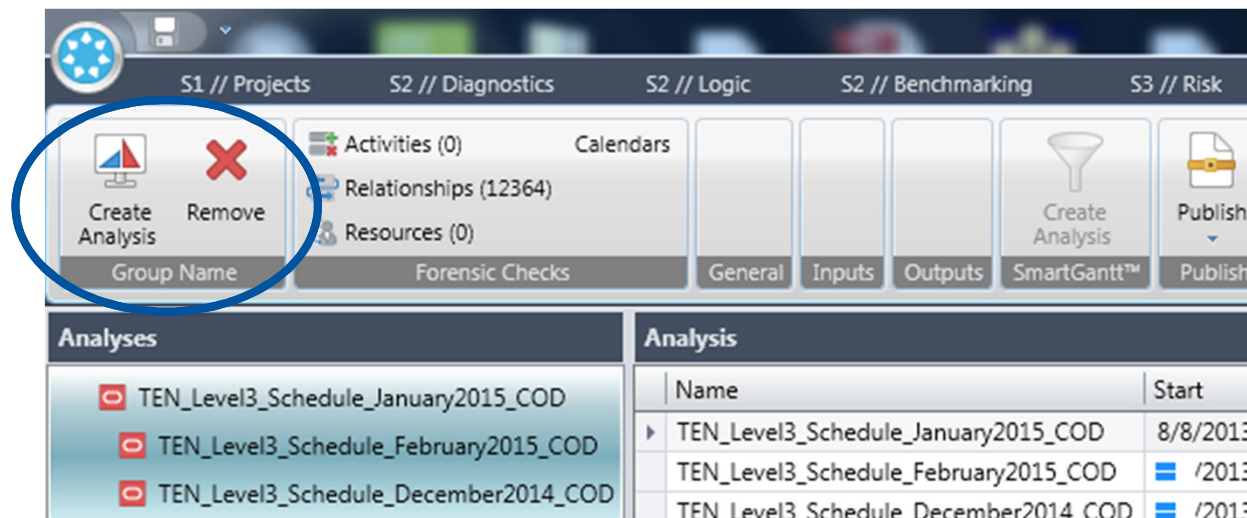
# Improved Forensics

**Deltek** Know more.  
Do more.™



# Improved schedule forensics

- Ability to compare any projects or snapshot in any order
- Ability to store multiple compares



# Demo

**Deltek** Know more.  
Do more.™

**Let's see how it works.**

The background of the slide is a dark blue gradient. Overlaid on this are several large, semi-transparent geometric shapes in various shades of blue and white. These shapes, which include triangles and polygons, are arranged to create a sense of depth and movement, resembling a stylized landscape or architectural structure. The shapes are layered, with some appearing more prominent than others, creating a complex, abstract composition.

# Upcoming Events





# DRMcNatty Monthly e-newsletter



Keeping you in the loop on the latest news,  
events and upcoming webinars.

Sign up for our newsletter on our website

[www.drmcnatty.com/news](http://www.drmcnatty.com/news)