



PROJECT MANAGEMENT SOLUTIONS THAT *SIMPLY WORK* SINCE 1989.

XER vs. XML: Tradition vs. Data Integrity

Dan Beck

CPM Conference January 12, 2017








Safe Harbor

- The statements made in this technical presentation are based on our current knowledge of the tools.
- Our statements should not be construed to be an official “Vendor perspective”, but are intended to be the sharing of technical and user knowledge gained as we explore new paths and technologies, usually in advance of our clients.
- You need to make your own judgments as to the application of our shared ideas in your own, unique environment.

Products and Services

- Project Controls System Implementation
- Cloud Based, Global Managed Hosting Services
- Software Training Services
- Integration, Analytics, Dashboards, Risk and Role-based User Access Tools
- Program and Project System Support Services and Partnering
- Mentored and Supported SB/DVBE Project Staffing Resources

Tool Matrix

Business Process	 ORACLE PRIMAVERA	 Asta Powerproject	 ABES PRISM	 Deltek ACUMEN	 ProjectStatus
Portfolio Management	P6, Unifier				View
Planning & Budgeting	Unifier	Powerproject	G2		Collaborate
Estimating		BidCon	Estimating		
CPM Scheduling	P6	Powerproject	Scheduling	Fuse	Status
Cost Management & Reporting	P6, Unifier	Powerproject	G2	Fuse	Collaborate
Document Management	Unifier		Prism Docs		
Change Management	Unifier		G2		
Engineering Forms	Unifier		G2		
BIM/Schedule Integration		Asta BIM			
Risk Analysis	P6 Risk	Asta Risk		Risk	Collaborate
Risk Management & Mitigation	P6			Risk	Collaborate
Role Based Cloud Dashboard	Dashboard		Dashboard		View
Earned Value	P6		Earned Value		
Claims Support & Analysis	P6	Powerproject		Fuse	
Facility Management/Work Orders	Unifier				
Mobile online/offline support	Mobile	Mobile			browser
Integration with Finance/ERP	Gateway		Integrator		Gateway

DRMcNatty supports these project controls tools as an authorized partner, trainer and implementer as well as providing trained and supported project staffing resources.

Abstract

XER vs. XML: Tradition vs. Data Integrity

ABSTRACT: When Importing/Exporting files into Primavera P6, it is necessary to understand the type of information that is being brought into the database. An “XER” file is a standard (proprietary), P6 file that allows users to transfer project files between P6 databases and some other applications. With Oracle moving more functionality to EPPM (Web), the P6 “XML” Import/Export method was leveraged to provide more Security, Stability & Flexibility when using P6.

In this presentation, we will review options available in XML Importing/Exporting in P6 Professional, as compared to “XER” that traditionalists may not know about.

Agenda

XER vs. XML: Tradition vs. Data Integrity

- What is an P6 XER File
- What is an P6 XML File
- Issues with File Formats
- Differences/Similarities between XML & XER
 - ❖ Export Formats
 - ❖ Import Formats
- Importing/Exporting an XER File
- Importing/Exporting an XML File
- Live Demonstration
- Summary
- Questions

XER vs. XML Tradition vs. Data Integrity

What is an XER File?

- An XER file is a standard proprietary Primavera P6 file that allows users to transfer project files.
- The Oracle Primavera proprietary format (XER) supports all Project, Resource and Role information that is developed in P6.
- The XER format enables users to export/import data between P6 Professional release 5.0, to the current version, 16.2 (17.1 due out in March 2017).
- An XER file is a text file and can be opened with a text editor.



XER vs. XML Tradition vs. Data Integrity

What is an XML File?

- Primavera P6 XML format enables users to share Project, Layouts and Baseline information between P6 Professional or P6 EPPM Databases
- An XML file can be used to provide more Import/Export functionality options
- An XML file allows for a higher level of granular control over data during Import
 - Move global codes and calendars to project-level data or remove them from the import.
 - Map codes, UDFs, resources and calendars to existing values in the database or rename them.
- An XML file is also a text file, but it is an open structure that has come into common use to exchange data over the internet.



XER vs. XML Tradition vs. Data Integrity

Issues with File Formats

- **XER**

- Low Level of data control that is being imported
- What version of P6 is the other party using?
- Layouts have to be exported separately, then imported individually
- POBS Tables (more information on next slide)

- **XML**

- High Level of data control that is being imported
- No issues with versioning control
- Layouts can be exported with the project file, then imported within the same file
- Import / Export Baselines with project

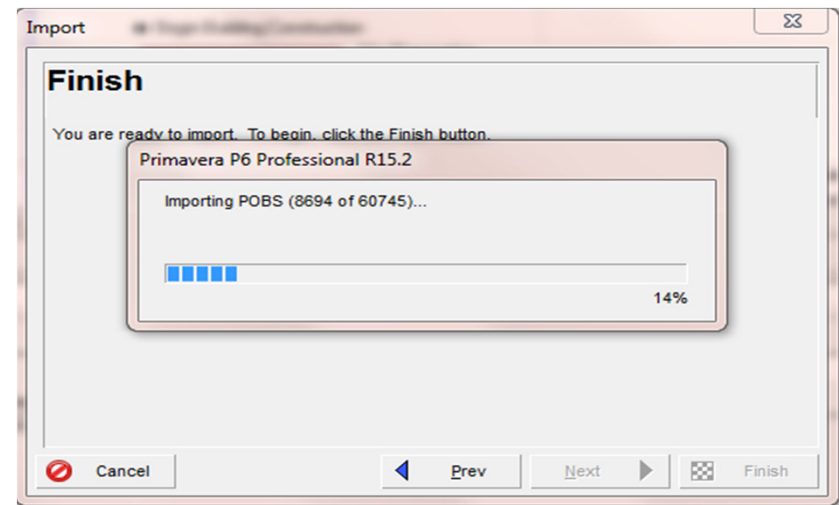
XER vs. XML Tradition vs. Data Integrity

Issues with File Formats – POBS Tables

- **POBS:**
 - How many people have encountered this issue?
 - How do we resolve this issue?
- There are many tools on the market to help resolve the POBS Tables Issue. We recommend Ron Winter's SAe Purge POBS



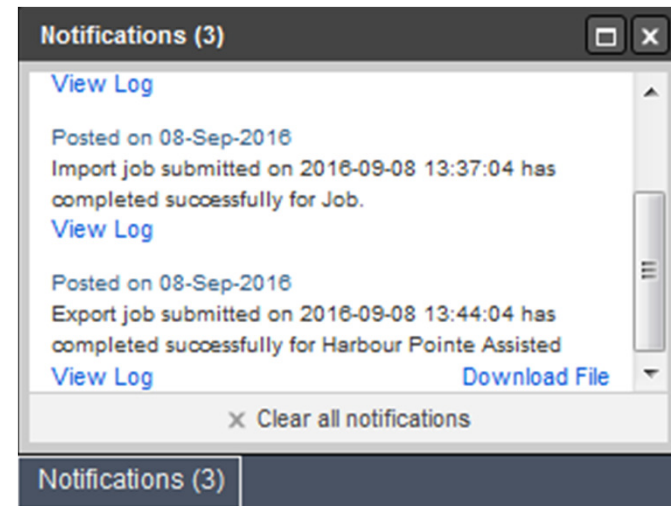
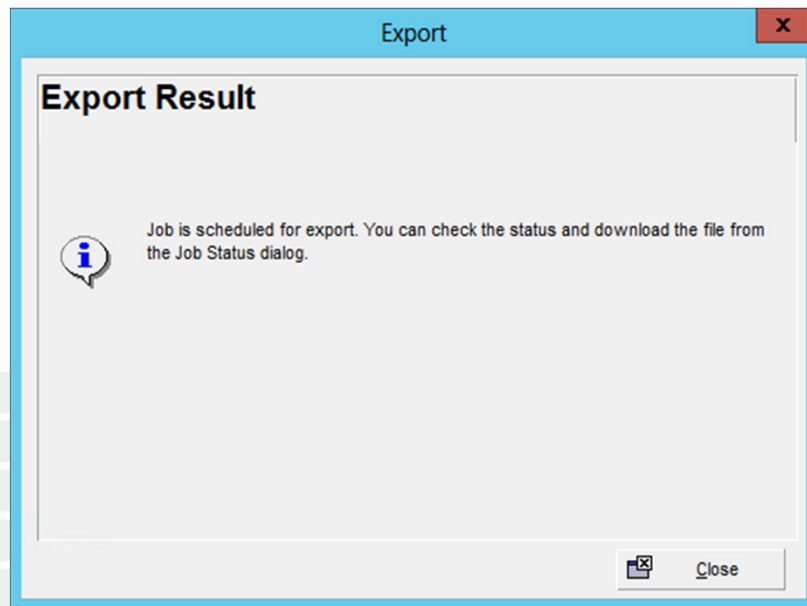
http://scheduleanalyzer.com/sae_p_POBS.htm



Export in 16.1 for XML

Exports has to be handled through Job Services

- When Exporting a project in P6 Professional in XML, that is connected to EPPM in a network, you will have to download the file using Job Services. You can see in the Export Result below, on the right, that the file will need to be downloaded from the Job Status dialog. In the Notifications tab of the Job Services in EPPM, you can see where the file can be downloaded. If you do not have access to EPPM, this will need to be handled by the P6 EPPM Administrator.



XER vs. XML Tradition vs. Data Integrity

Differences/Similarities between XML & XER Export Formats

DIFFERENCES BETWEEN XML AND XER IN EXPORT FORMATS		
The following table compares the features and benefits of both formats for exporting project data.		
A checkmark represents that a particular format is better suited for that functionality.		
FUNCTIONALITY	XML	XER
Data Formats:		
XER is Proprietary	<input checked="" type="checkbox"/>	<input type="checkbox"/>
XML is an Industry-Standard Format	<input type="checkbox"/>	<input checked="" type="checkbox"/>
Multiple Projects:		
XER supports exporting multiple projects at once to a single XER file	<input checked="" type="checkbox"/>	<input checked="" type="checkbox"/>
XML supports exporting multiple projects at once to a single XML file	<input type="checkbox"/>	<input type="checkbox"/>
Baseline Export:		
XER does not support the export of Baselines	<input checked="" type="checkbox"/>	<input type="checkbox"/>
XML supports the export of Baselines	<input type="checkbox"/>	<input checked="" type="checkbox"/>
Job Services:		
XER supports scheduling exports on a regular basis of services	<input type="checkbox"/>	<input checked="" type="checkbox"/>
XML does not support	<input checked="" type="checkbox"/>	<input type="checkbox"/>

XER vs. XML Tradition vs. Data Integrity

Differences/Similarities between XML & XER Import Formats

DIFFERENCES BETWEEN XML AND XER IN IMPORT FORMATS		
The following table compares the features and benefits of both formats for importing project data.		
A checkmark represents that a particular format is better suited for that functionality.		
FUNCTIONALITY	XML	XER
Security:		
XML always enforces individual user security settings, and never violates user security restrictions. If there is a security conflict, the import will try to continue and ignore data that a user should not have access to; if it is not possible to continue while ignoring data, the import is stopped. Security is never bypassed when updating data.	☑	☐
XER allows updates to all data if you have the Import Project Management XER, MPP, MPX security privilege set		
Exclusive Project Access		
XML always opens a project as Exclusive, and will stop the import if it cannot gain Exclusive Access, This ensures that other users are not changing data during the import process.	☑	☐
XER accesses projects as Shared, which means other users can update data in the middle of the import process		

XER vs. XML Tradition vs. Data Integrity

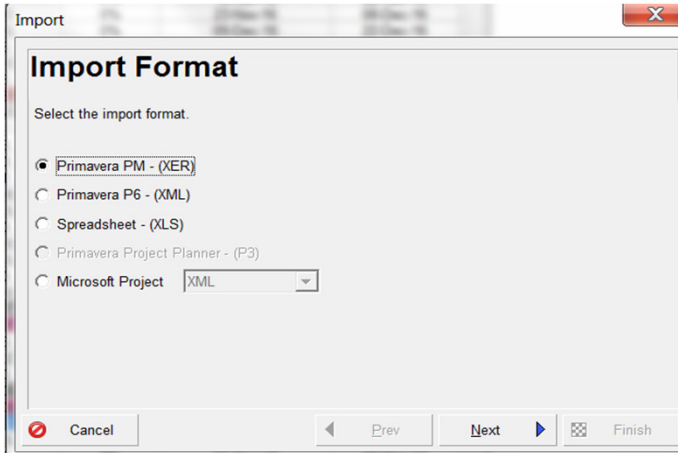
Differences/Similarities between XML & XER Import Formats

DIFFERENCES BETWEEN XML AND XER IN IMPORT FORMATS		
The following table compares the features and benefits of both formats for importing project data.		
A checkmark represents that a particular format is better suited for that functionality.		
FUNCTIONALITY	XML	XER
Committing Data:		
XML will not commit partial data. If an import action for a specific transaction fails before all data is committed, XML rolls back the data; Global and Project-Specific imports are treated as separate transactions.	✓	☐
XER can end up with partial commits of data		
Work Shift Handling:		
XML replaces any existing work shifts	✓	☐
XER tries to insert work shifts, which can potentially corrupt your shift decisions		
Multiple Projects:		
XER supports importing multiple projects at once from a single XER file	✓	✓
XML supports importing multiple projects at once from a single XML file		
Baseline Import:		
XER does not support the import of Baselines	✓	☐
XML supports the import of Baselines		

XER vs. XML Tradition vs. Data Integrity

Importing/Exporting a XER File

Importing



Import Format

Select the import format.

- Primavera PM - (XER)
- Primavera P6 - (XML)
- Spreadsheet - (XLS)
- Primavera Project Planner - (P3)
- Microsoft Project

Cancel Prev Next Finish



File Name

Please enter the file name of the .xer file being imported.

File Name

C:\Users\dbeck\Desktop\XER.xer

Cancel Prev Next Finish

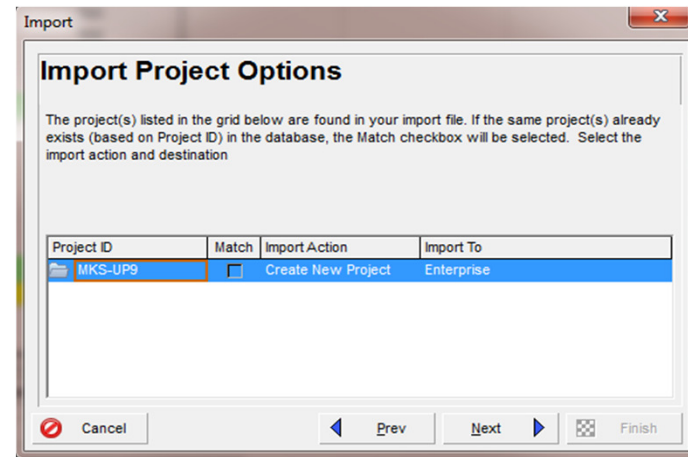


Import Type

Select the type of data to import.

- Project
- Resource Only
- Role Only

Cancel Prev Next Finish



Import Project Options

The project(s) listed in the grid below are found in your import file. If the same project(s) already exists (based on Project ID) in the database, the Match checkbox will be selected. Select the import action and destination

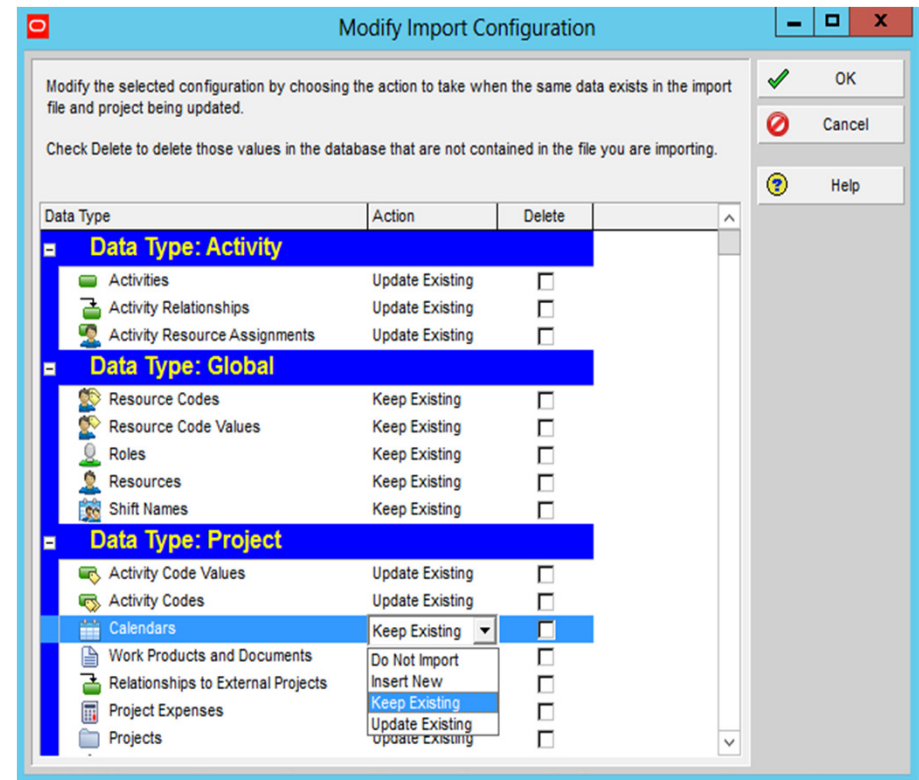
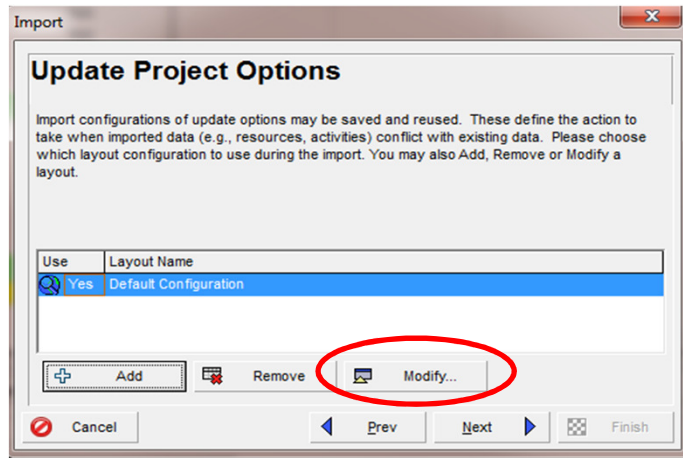
Project ID	Match	Import Action	Import To
MKS-UP9	<input type="checkbox"/>	Create New Project	Enterprise

Cancel Prev Next Finish

XER vs. XML Tradition vs. Data Integrity

Importing/Exporting a XER File

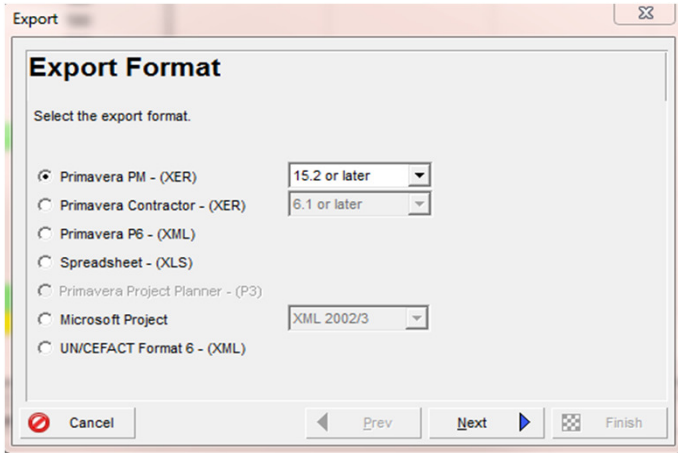
Importing



XER vs. XML Tradition vs. Data Integrity

Importing/Exporting a XER File

Exporting

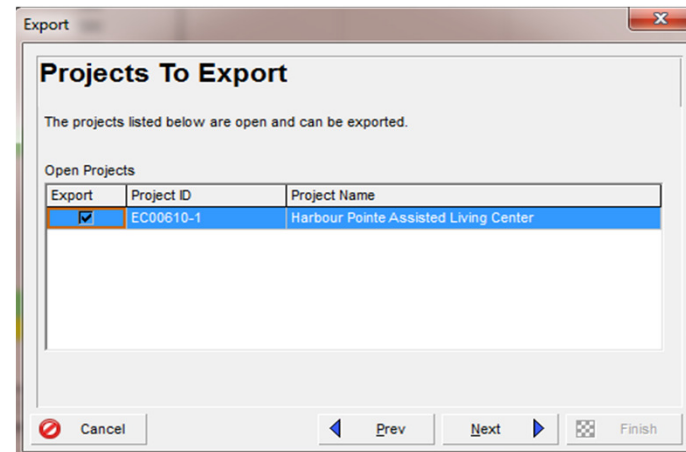


Export Format

Select the export format.

- Primavera PM - (XER) 15.2 or later
- Primavera Contractor - (XER) 6.1 or later
- Primavera P6 - (XML)
- Spreadsheet - (XLS)
- Primavera Project Planner - (P3)
- Microsoft Project XML 2002/3
- UN/CEFACT Format 6 - (XML)

Cancel Prev Next Finish



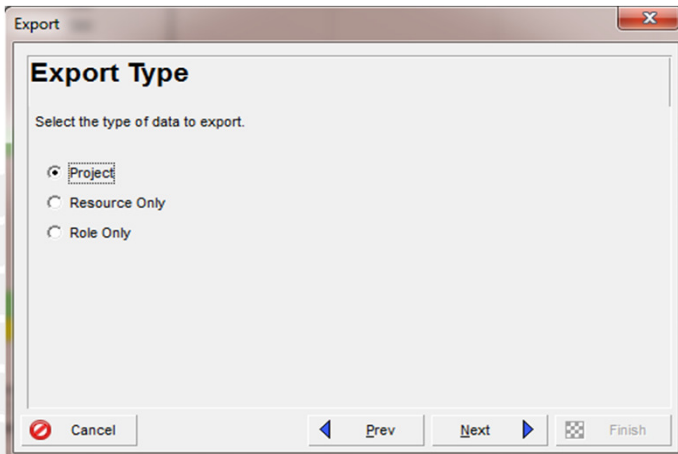
Projects To Export

The projects listed below are open and can be exported.

Open Projects

Export	Project ID	Project Name
<input checked="" type="checkbox"/>	EC00610-1	Harbour Pointe Assisted Living Center

Cancel Prev Next Finish



Export Type

Select the type of data to export.

- Project
- Resource Only
- Role Only

Cancel Prev Next Finish



File Name

What is the name of the .xer file?

File Name

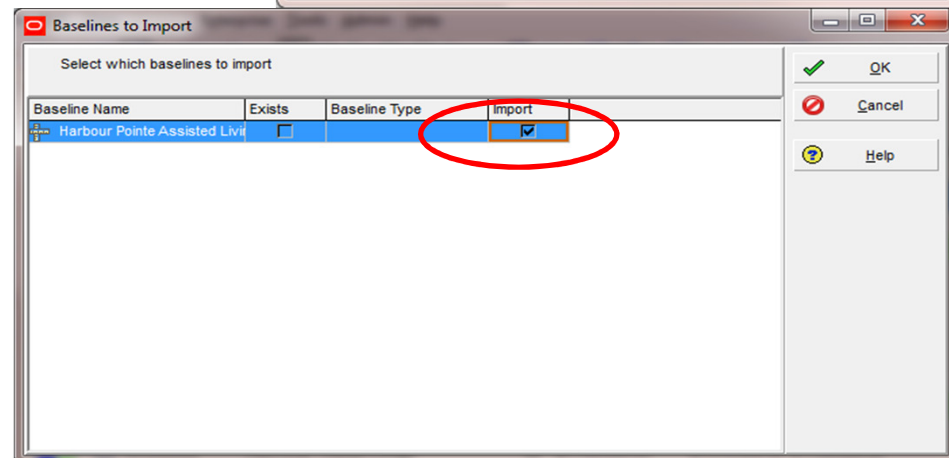
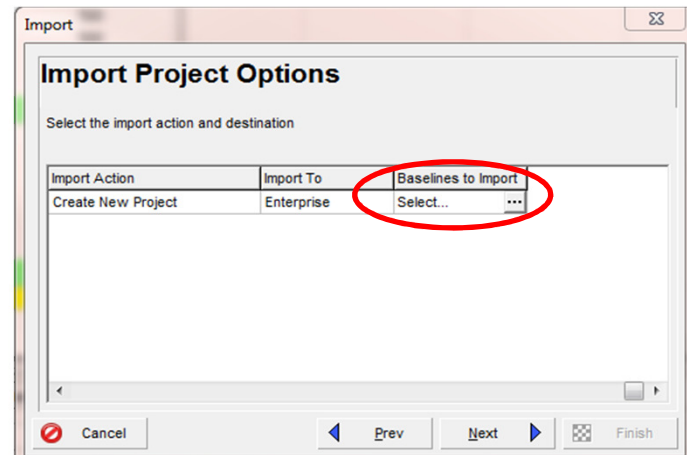
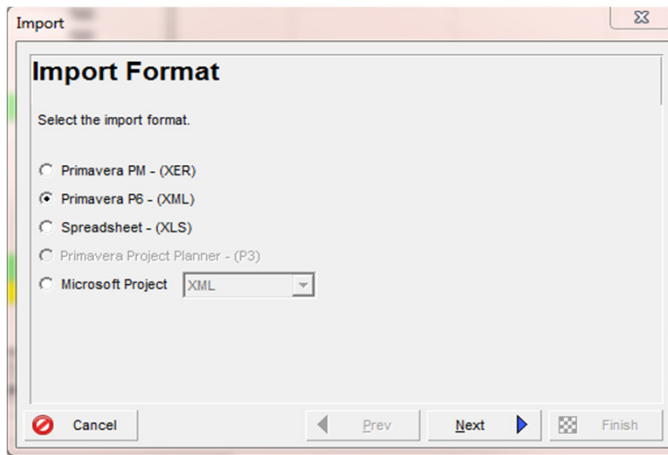
C:\Users\dbeck\Desktop\XER.xer

Cancel Prev Next Finish

XER vs. XML Tradition vs. Data Integrity

Importing/Exporting a XML File

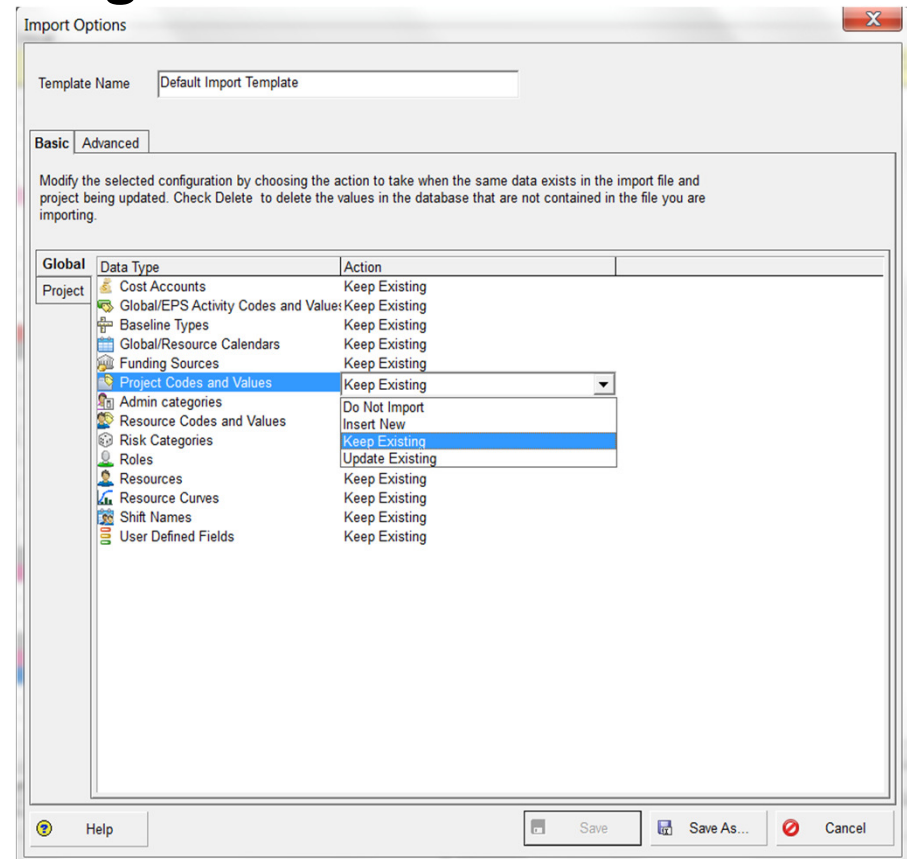
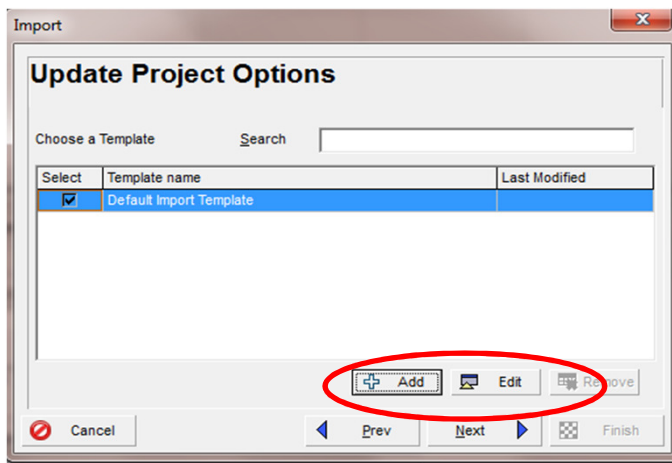
Importing



XER vs. XML Tradition vs. Data Integrity

Importing/Exporting a XML File

Importing



XER vs. XML Tradition vs. Data Integrity

Importing/Exporting a XML File

Importing

Import Options

Template Name: Default Import Template

Basic | **Advanced**

Codes

UDFs

Calendars

Resources

Basic Action

Activity Codes/Values: Keep Existing

Advanced Actions

Select subject area: Activity

Name	Scope	Action	New Name
Key Milestones	Global	Keep	
Key MS			
Department	Global	Keep	
CON			
ENG			
Responsibility	Global	Keep	
HARIS			
EVANS			
FOLEY			
MILLS			
NOLAN			
Phase	Global	Keep	

Help Save Save As... Cancel

Import Options

Template Name: Default Import Template

Basic | **Advanced**

Codes

UDFs

Calendars: GlobalResource Calendars Keep Existing

Resources

Basic Action

Advanced Actions

Name	Type	Details	Action
Corporate - Standar	Global		Keep
Trades - 5 Day Wor	Global		Keep
Carpenters Shared	Resource		Keep
IT - Information Tech	Resource		Keep

Help Save

Calendar Details

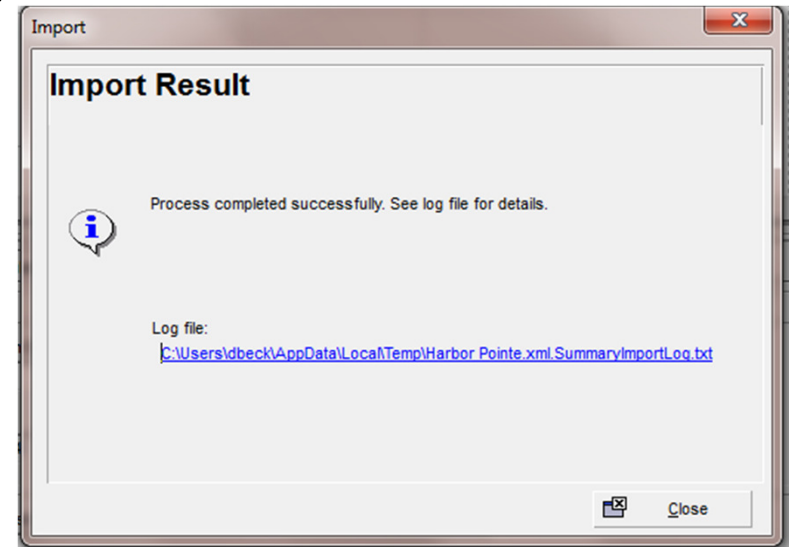
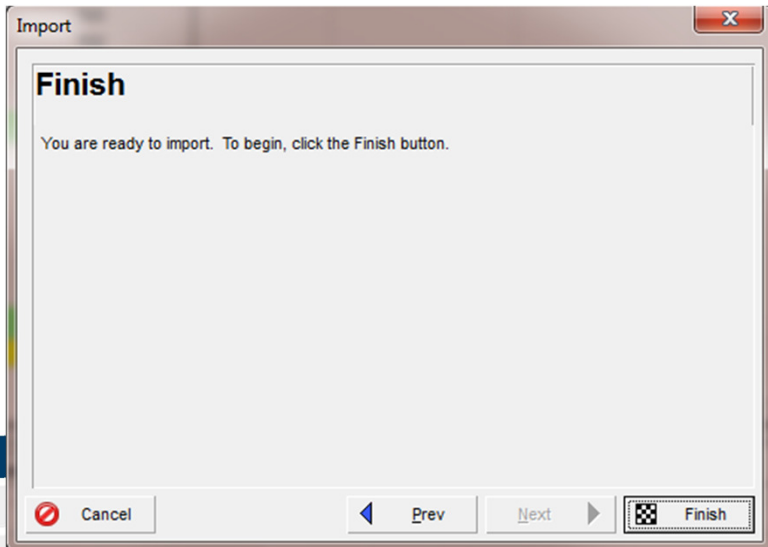
Corporate - Standard Full Time

Day of Week	Time periods
Sunday	--
Monday	08:00 AM-04:00 PM
Tuesday	08:00 AM-04:00 PM
Wednesday	08:00 AM-04:00 PM
Thursday	08:00 AM-04:00 PM
Friday	08:00 AM-04:00 PM
Saturday	--

XER vs. XML Tradition vs. Data Integrity

Importing/Exporting a XML File

Importing



XER vs. XML Tradition vs. Data Integrity

Importing/Exporting a XML File

```
Harbor Pointe.xml.SummaryImportLog - Notepad
File Edit Format View Help
XML global import completed successfully

CostAccount: 1 matched, 1 not imported.
Currency: 1 matched, 1 not imported.
UDFType: 9 matched, 9 not imported.
NotebookTopic: 7 matched, 7 not imported.
ThresholdParameter: 2 matched, 2 not imported.
OBS: 2 matched, 2 not imported.
Calendar: 4 matched, 4 not imported.
ProjectCodeType: 16 matched, 16 not imported.
ProjectCode: 16 matched, 16 not imported.
ResourceCodeType: 4 matched, 4 not imported.
ResourceCode: 17 matched, 17 not imported.
Role: 3 matched, 3 not imported.
RoleRate: 2 matched, 2 not imported.
Resource: 31 matched, 31 not imported.
ResourceRate: 27 matched, 27 not imported.
ActivityCodeType: 4 matched, 4 not imported.
ActivityCode: 15 matched, 15 not imported.
FinancialPeriod: 8 matched, 8 not imported.
ResourceRole: 10 matched, 10 not imported.

In total:
    0 objects created.
    0 objects updated.
    179 objects matched.
    179 objects not imported.
    179 objects processed.

XML import of Project "Harbour Pointe Assisted Living Center" initiated.
ActivityPeriodActual ((202,98161)): import option modified to "Do Not Import" as activity is not started.
ActivityPeriodActual ((202,98187)): import option modified to "Do Not Import" as activity is not started.
WARNING: Document is skipped as this type of object is not recognized or invalid.
WARNING: Referenced business object RiskCategory with object id 600 cannot be found, ignoring field RiskCategoryObjectId on business object Risk 'concrete supply constrained' (3016)
WARNING: Referenced business object RiskCategory with object id 664 cannot be found, ignoring field RiskCategoryObjectId on business object Risk 'site access restricted for 2 weeks' (3017)
WARNING: Referenced business object RiskCategory with object id 650 cannot be found, ignoring field RiskCategoryObjectId on business object Risk 'weather delay due to hurricane' (3018)
WARNING: Referenced business object RiskCategory with object id 650 cannot be found, ignoring field RiskCategoryObjectId on business object Risk 'Poor ground conditions' (3019)
WARNING: Referenced business object RiskCategory with object id 660 cannot be found, ignoring field RiskCategoryObjectId on business object Risk 'Failed electrical inspection' (3020)
WARNING: Referenced business object RiskCategory with object id 664 cannot be found, ignoring field RiskCategoryObjectId on business object Risk 'Interior design changes' (3021)
```

XER vs. XML Tradition vs. Data Integrity

Importing/Exporting a XML File

Exporting

Export dialog box showing 'Export Format' options. The 'Primavera P6 - (XML)' option is selected. Other options include Primavera PM - (XER), Primavera Contractor - (XER), Spreadsheet - (XLS), Primavera Project Planner - (P3), Microsoft Project, and UN/CEFACT Format 6 - (XML). Version dropdowns are visible for XER and XML options.

Export dialog box showing 'Projects To Export' list. The 'Harbour Pointe Assisted Living Center' project is selected. The 'Baselines to Export' column is circled in red.

Export	Project ID	Project Name	Baselines to Ex
<input checked="" type="checkbox"/>	EC00610-1	Harbour Pointe Assisted Living Center	Select...

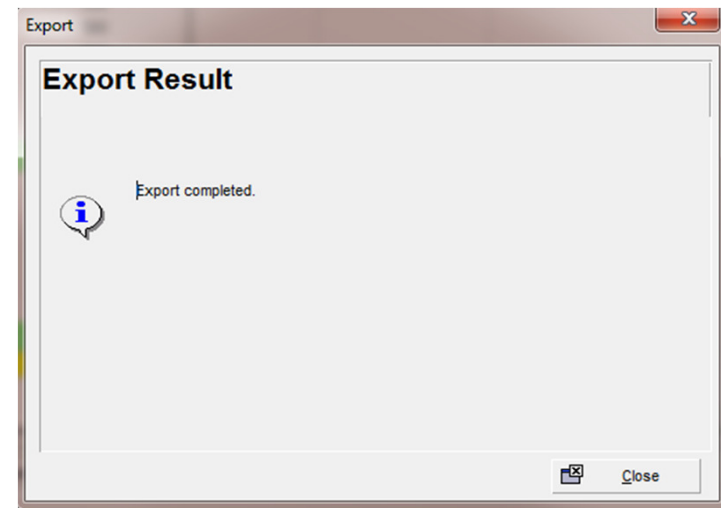
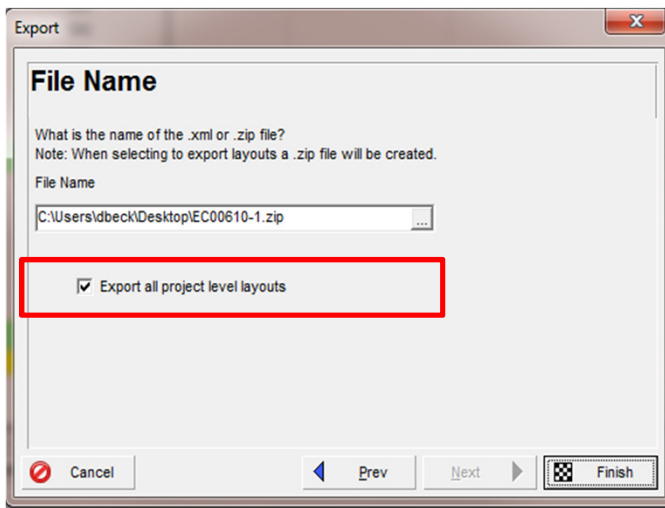
Baselines to Export dialog box showing a table of baselines. The 'Export' column is circled in red.

Baseline Name	Baseline Type	Data Date	Last Update Date	Export
Harbour Pointe - B2-1		01-Sep-10	24-Aug-16	<input checked="" type="checkbox"/>

XER vs. XML Tradition vs. Data Integrity

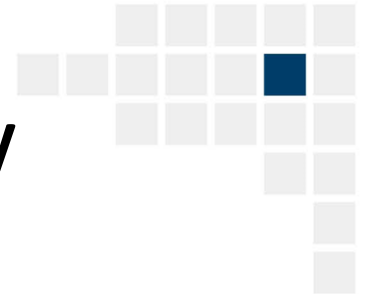
Importing/Exporting a XML File

Exporting



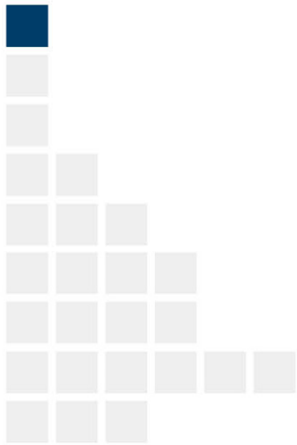
NOTE: Notice that the exported file was created as a Zip File. When users choose to include Project Level Layouts in the Export, the system will create the exported XML file as a Zip. If users choose without the layouts, the file will be created as a normal XML file.

XER vs. XML Tradition vs. Data Integrity



Live Demo

- Exporting an XML File
- Importing an XML File
- Import Template Options
- Import Log File



XER vs. XML Tradition vs. Data Integrity

Summary

- What method is better to use?
- Can I send all project information or just partial information?
 - Project Layouts
 - Baselines
- Data Security?
 - Import Template Options
- Why do most specifications call for XER?
 - USACE/DOD/DOE/DCMA – Standardized on the UN/CEFACT (XML Format)
 - This XML schema is designed to exchange schedule and cost data in a software-neutral format. This is an important feature for customers who work with U.S. Department of Defense and other U.S. government agencies because as of June 2012 they are required to submit their schedules in the UN/CEFACT XML schema format.

Questions



Thank you for attending
dbeck@drmcnatty.com

DRMcNatty Monthly e-newsletter

the
Loop

Keeping you in the loop on the latest news,
events and upcoming webinars.

Sign up for our newsletter on our website

www.dr McNatty.com/news