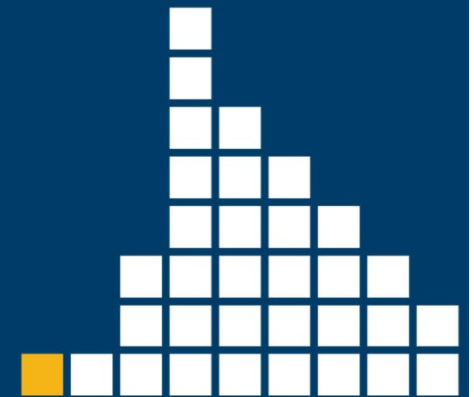




PROJECT MANAGEMENT SOLUTIONS THAT *SIMPLY WORK* SINCE 1989.

Oracle Primavera P6 User Forum

Brian Criss, PSP
November 30, 2016



www.drmcnatty.com

Thank you for joining today's webinar

- Mute – all call in phones are automatically muted in order to preserve the quality of the audio for all attendees.
- Questions – during the session, questions can be submitted through the Questions Box on the right side of the screen . We will try to address your questions at the end of the presentation, time permitting.
- Follow up – all registrants will receive an Excel file listing all questions and responses along with a link to the recorded webinar.

Agenda

P6 User Forum

- The purpose of the P6 User Forum is to engage the P6 community to improve efficiency and use of P6.
- Attendees are welcome to continue to submit their questions that may be used in future DRMcNatty webinars.
- Comments and suggestions are welcome.

Printing Layouts: Is there any automatic way of enabling insert of manual page breaks to improve readability of printed schedules?

- Page Breaks

- Page break options are available in the group/sort window.
- Page breaks are available for all grouping options.
 - Codes / WBS
- Page Break options also exist in the repot editor screens for tabular reports.

Page Break Options in the Group / Sort options

Group and Sort

Display Options

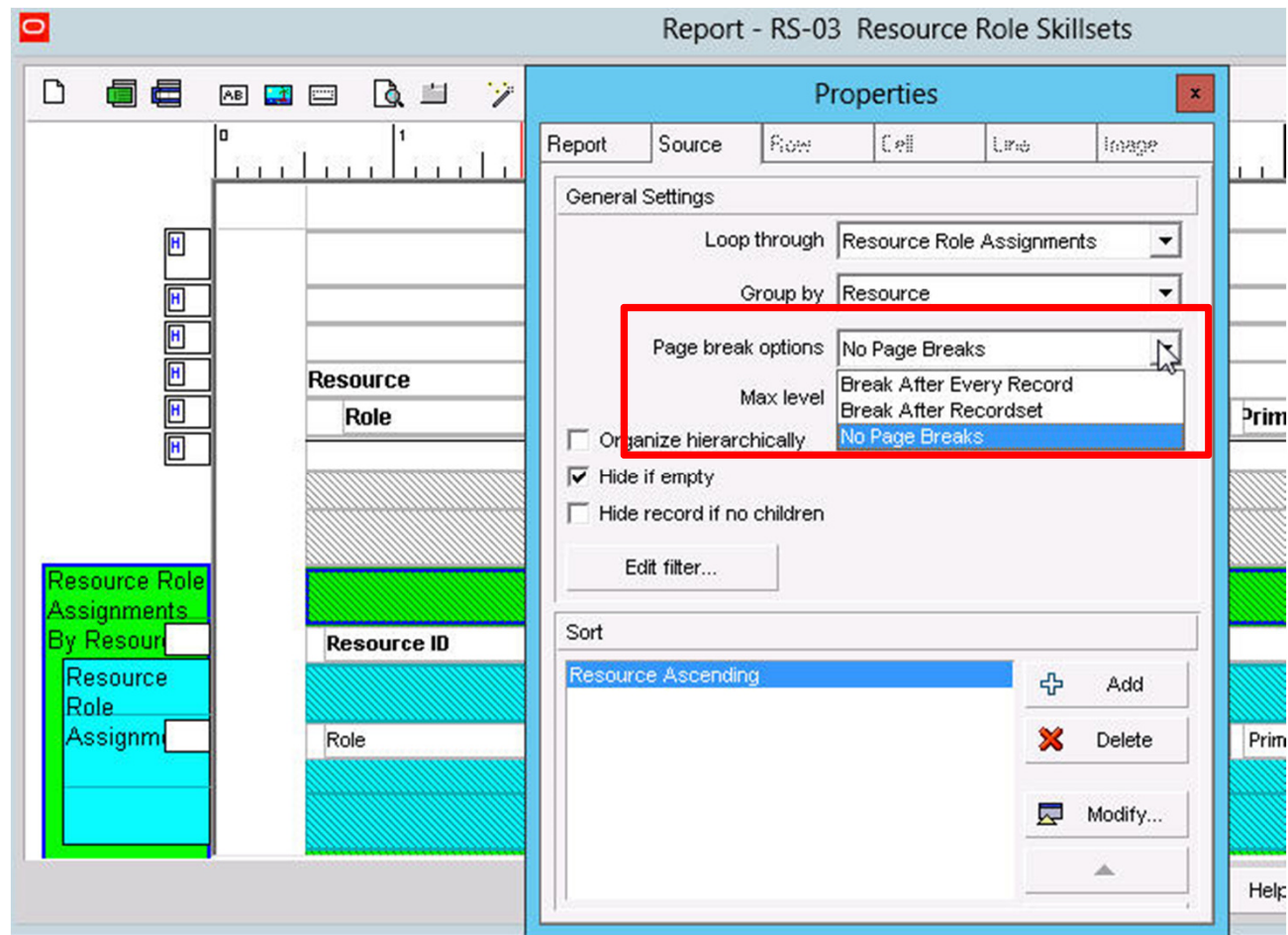
- ☒ Show Group Totals
- ☐ Show Grand Totals
- ☐ Show Summaries Only
- ☐ Shrink vertical grouping bands

Group By

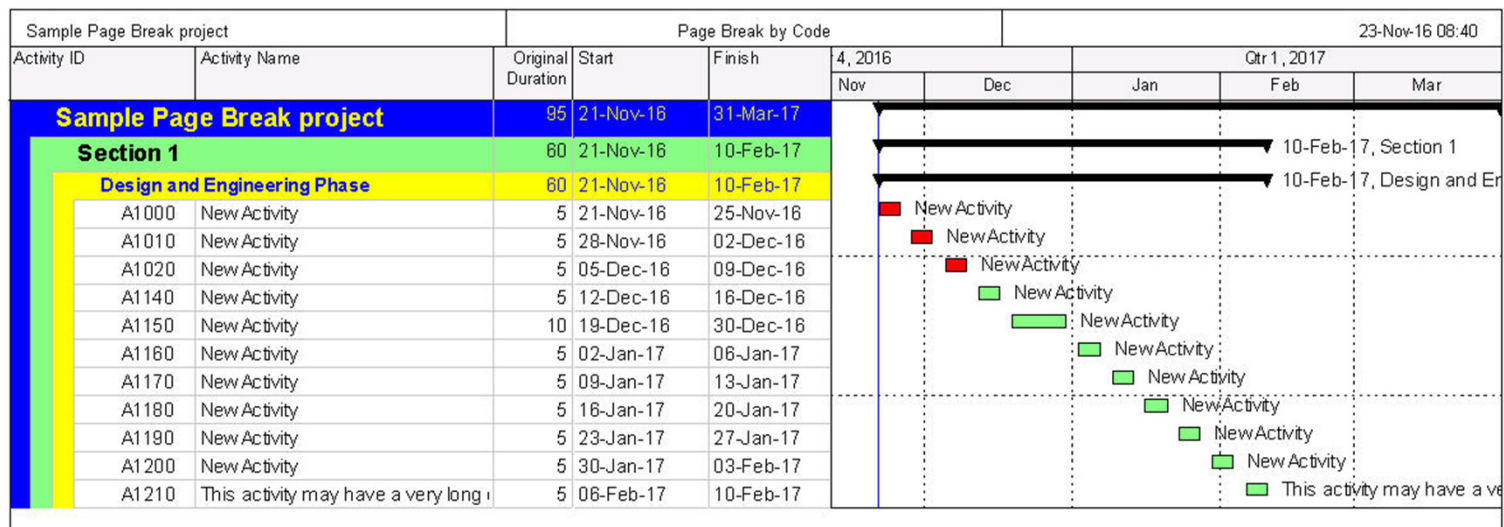
| Group By | Indent | To Level | Group Interval | Page Break | Font & Color |
|-------------|-------------------------------------|----------|----------------|-------------------------------------|--------------|
| WBS level 1 | <input checked="" type="checkbox"/> | 2 | | <input type="checkbox"/> | 12 Arial |
| WBS level 2 | | | | <input type="checkbox"/> | 11 Arial |
| Phase | <input type="checkbox"/> | All | | <input checked="" type="checkbox"/> | 9 Arial |
| | | | | | 8 Arial |
| | | | | | 8 Arial |

OK
Cancel
Apply
Delete
Sort...
Default
Help

Page Break Options in the Group / Sort options




Printing Layouts: Is there a setting that will allow the software to automatically switch activity descriptions from the right end of the activity bar to the left end of the activity bar, so that the description will not be cutoff based on the timescale to be printed? As it is now, we have to make the timescale much longer than it otherwise need to be in order to avoid cutting off activity descriptions.





I have lots of layouts/filters defined for sorting and selecting Activity Codes.

For Example, I select certain physical areas of the project in a contractor's schedule using Location Code. However, when applying to the next month's update, the Location Code lines in the layout and filter are gone.



Do you know why this would happen and a fix to this problem? this does not happen when selecting using WBS.

Answer

Project Level Activity codes are stored in the database with a proj_id value linked to the code so that the code and values are available ONLY within that single project.

When Project Level Activity Codes are used in a layout, the layout retains a link to the code in the database which is linked to a given Project ID.

Potential Options

- Edit the layout monthly to use the new unique project specific activity code that was imported with the contractor schedule.
- Try “Update Existing” when importing the contractor schedule on a monthly basis.
 - My need to use caution here...specifically if information (activities, logic, etc.) has been removed during the update period.
- Try EPS Level Activity codes
 - Note: The EPS activity code needs to be in the receiving database first.



While working on Primavera P6, I am encountering a rather strange error. When I am linking my activities or giving any relationships whatsoever the following error as the attachment pops up. Can someone help me out, I have tried restarting and everything thing possible.

- *PRM DBAccess Error: ORA-12952:*

“The request exceeds the maximum allowed database size of 4 GB”



P6 Database size considerations

- Things that take more size than you think
 - **Activities and Metadata**
 - Codes
 - UDF's
 - **Baselines**
 - **Often the number of Projects is not the what drives the size limitations, but the amount of metadata contained within the projects themselves.**

Auto Tracking Of Project Expenses Based On % Completion of Activities

I had loaded expenses in each activities and updated project but expenses are not able to reflect based on % completion of activities.

Settings:

Activities % complete type : Duration

Auto complete actual for expenses : activated

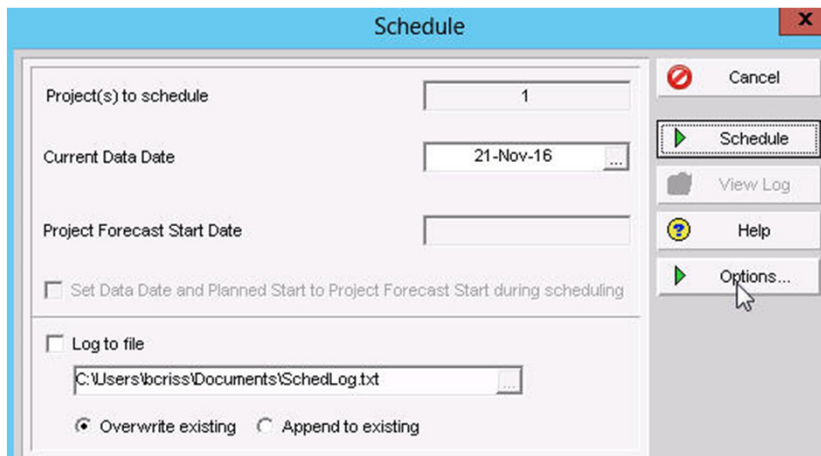
- Update Progress
- Apply Actuals
- Settings

I'm trying to get the driving activities path for a given activity in the Gantt chart view, something like the "Trace Logic" tool but using bars.

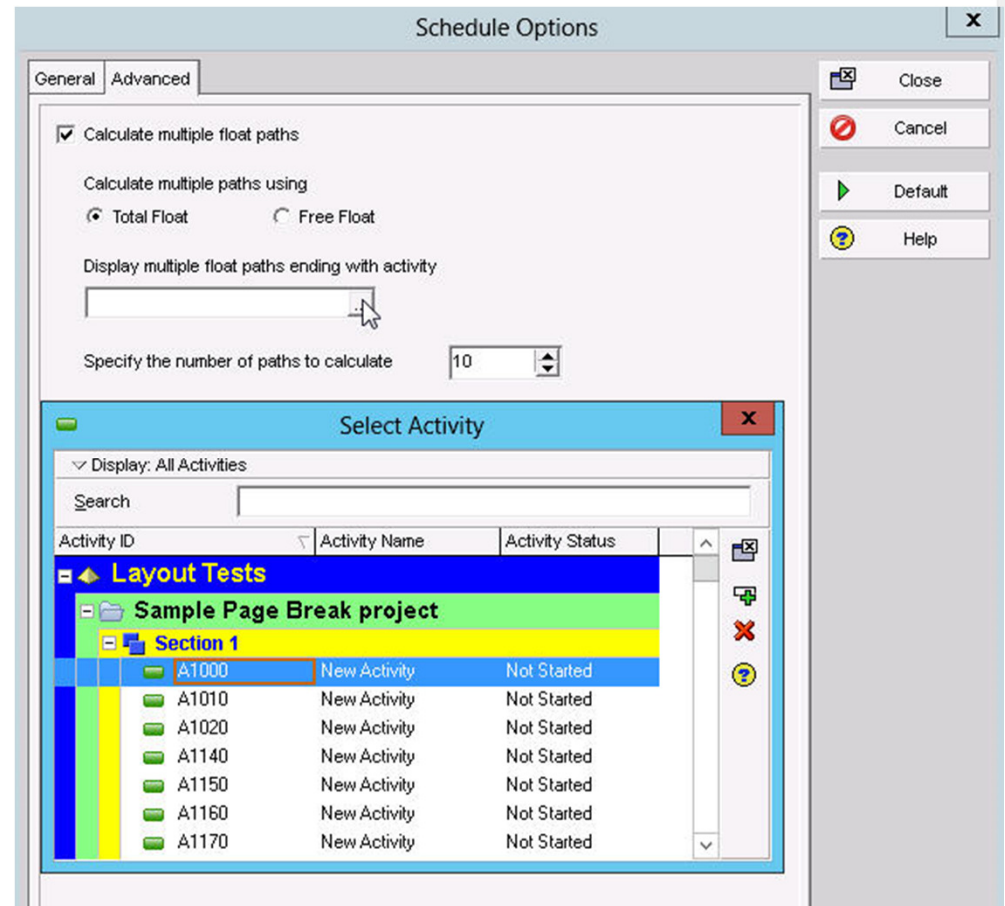
Is there any way to get it in a single click operation instead of clicking one by one with the GoTo button in the relationships tab?

- Float Paths
 - Navigate to the Advanced tab of the "Scheduling Options"
 - Use Free Float in calculation
 - Select the desired activity to end the float path analysis at.

Advanced Schedule Options



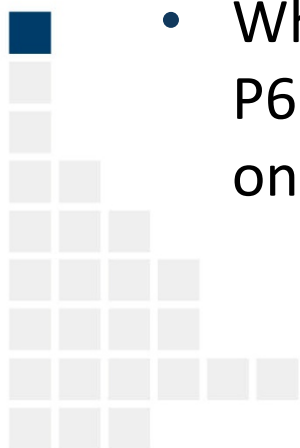
After pressing the F9 key, select "Options" to find the "Advanced" tab

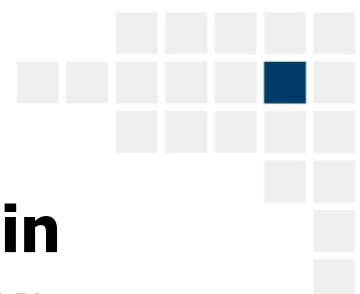




Do you know how to get the WBS to total up actual work days vs the calendar work days it show now?

- Check calendars assignments for activities within WBS
- Review the Project Default Calendar
- When different calendars are used within a single WBS, P6 will show the total in the WBS grouping band based on the project default calendar.





I have been having issues with Print preview in P6 15.2. When trying to add elements in either the Footer or Header, I am unable to add any of the variables from the drop down list. Is there a known fix for this issue or did this occur from the installation?

- 
- Page Breaks

Questions & Comments

- All questions are gathered into a master sheet, answered and distributed to all registrants as well as posted on our website.
- Answers are based on our own experiences using the various software products covered in this webinar.

Thank you for participating

Contact - contact@drmcnatty.com

DRMcNatty Monthly e-newsletter



Keeping you in the loop on the latest news,
events and upcoming webinars.

Sign up for our newsletter on our website

www.drmcnatty.com/news

Upcoming Events

