

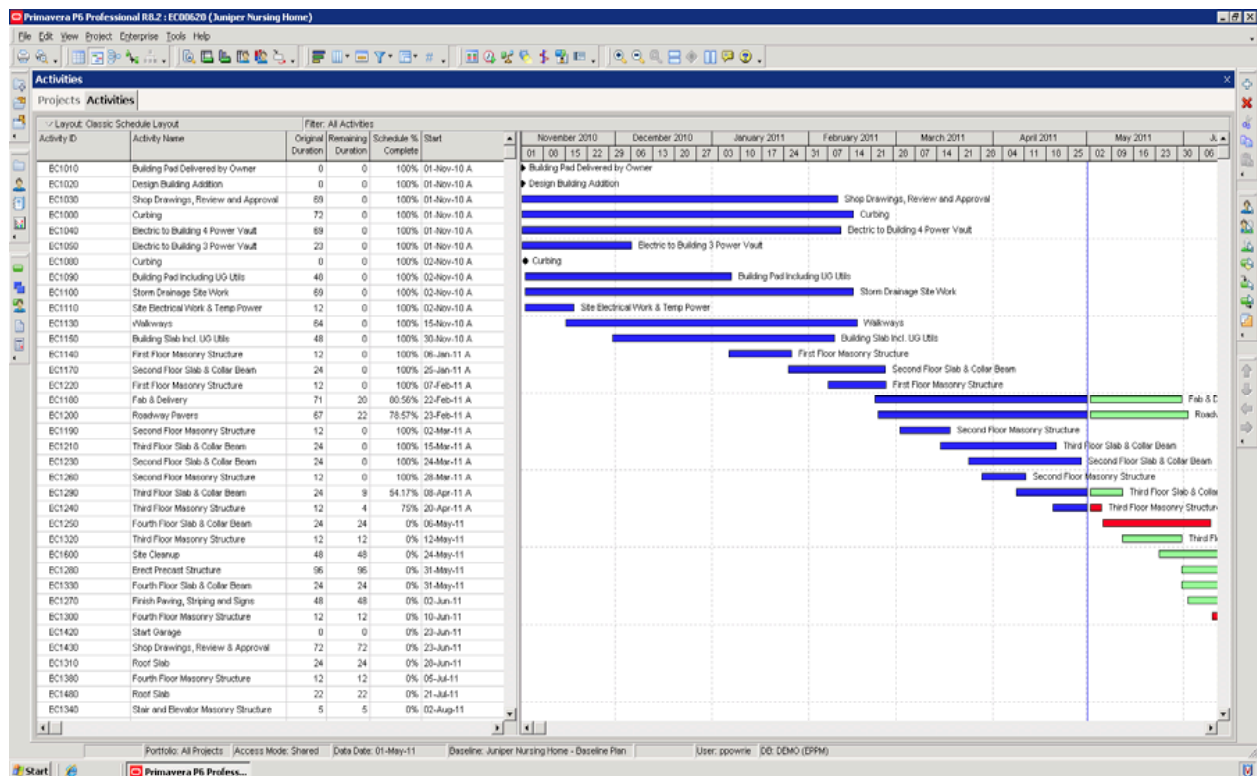
TECH TIP

ADDING LINE NUMBERING TO LAYOUT ORACLE PRIMAVERA P6 PROFESSIONAL

Reviewing schedules and collaborating with others during a meeting can be made easier and more effective by adding the Line Numbers to a layout. Line Numbers can be especially useful if Activity ID's are not in numerical order or are long and complex. By simply selecting Line numbers from your View a column will be created with Line Numbers, which can then be used to reference specific activities.

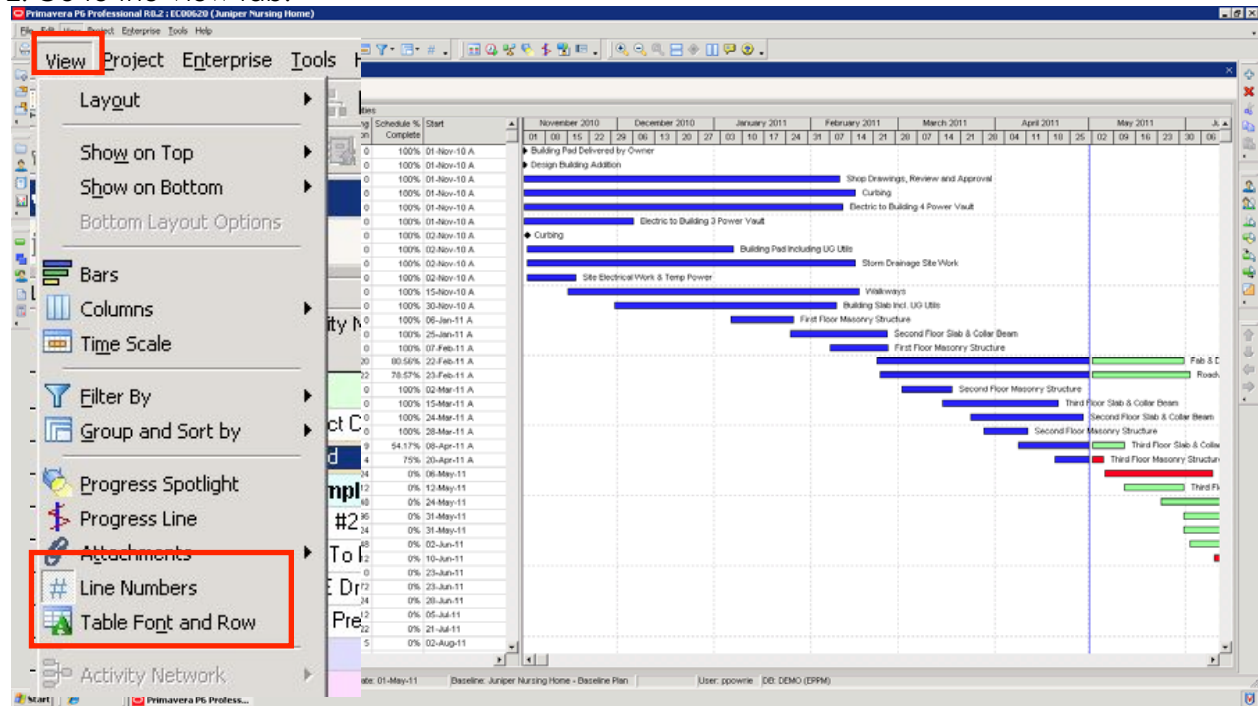
This option is available only in P6 R8.2 Professional.

1. Open Project.

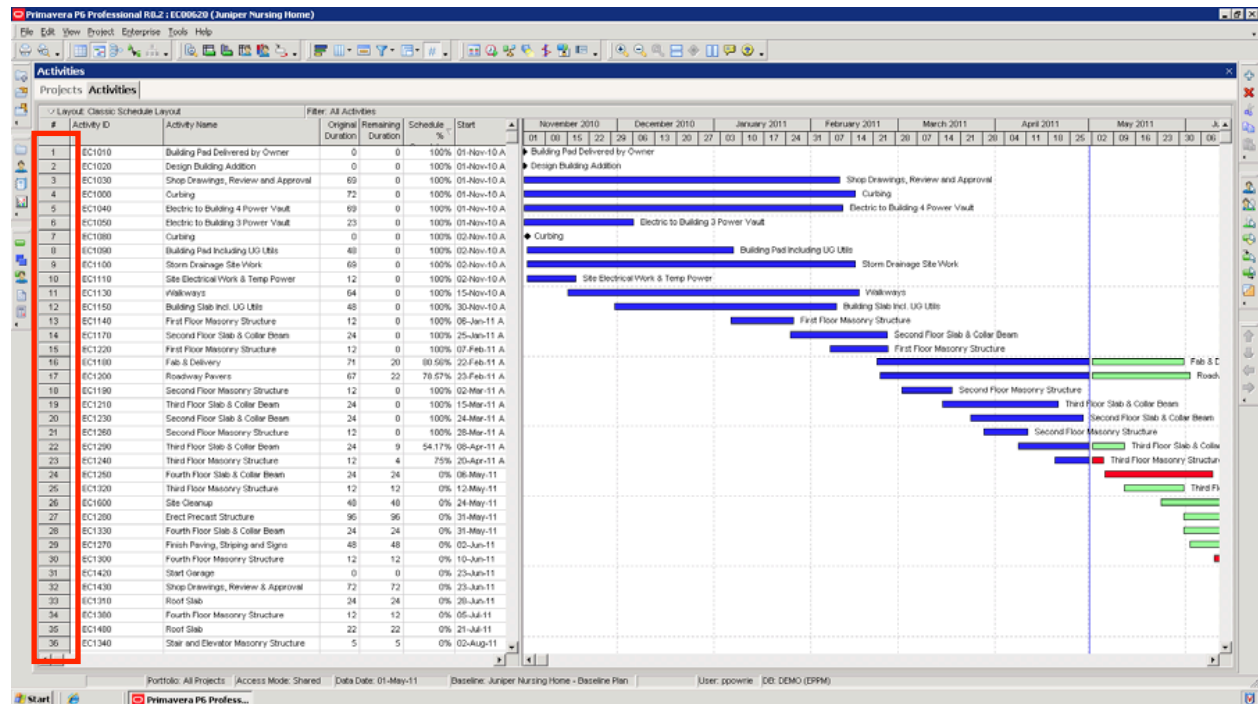


ADDING LINE NUMBERING TO LAYOUT

2. Go to the View tab.



3. Select Line Numbers.



You can now reference Line Numbers instead of the associated Activity Id's. For example, Line 7 is easier to reference than Activity ID EC1080.