



P6 Professional Report Writer

Don McNatty, PSP

June 25, 2014

ORACLE® Platinum
Partner



**ORACLE SPECIALIZED
CONSULTANTS**

- Unifer Implementation Specialists
- Primavera P6 Implementation Specialists
- Primavera Contract Management Implementation Specialists
- P6 Certified Trainers
- Contract Management Certified Trainers

***2014 Technical
Webinar Series***



Thank you for joining today's technical webinar

- Mute – all call in phones are automatically muted in order to preserve the quality of the audio for all attendees.
- Questions – during the session, questions can be submitted through the Questions Box on the right side of the screen . We will try to address your questions at the end of the presentation, time permitting.
- Follow up – all registrants will receive an Excel file listing all questions and responses along with a link to the recorded webinar.

Safe Harbor

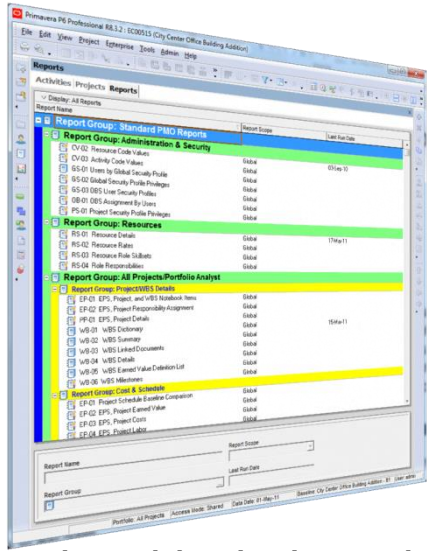
- The statements made in this technical presentation are based on our current knowledge of the tools.
- Our statements should not be construed to be an official “Oracle perspective”, but are intended to be the sharing of technical and user knowledge gained as we explore new paths and technologies, usually in advance of our clients.
- Our statements should not be construed as in conflict with any Oracle statement, as the Oracle statement is may be based on more current information than has been made available to us.

- Oracle Primavera Software
- Oracle Primavera Certified Training & Implementation Services
- Custom Integration, Analytics and Dashboard Utilities
- Project Support Services and Partnering



- Global, dedicated environment hosting services
- Primavera OPPM, P6 EPPM, P6 Pro, Primavera Unifier, Contract Management, BI Publisher, UCM/Sharepoint, P6 Risk, AutoVue and Analytics
- Hard Dollar, HCSS, Acumen Fuse, Ecosys, Prism G2, US Cost, Microsoft...
- Global Data Centers in USA, London, Singapore and Brisbane

Abstract – P6 Pro 8.3 Report Writer

[illegible]

| City Center Office Building Addition Issue Date: 09-26-14 13:07 | | Primavera Project Report | | |
|--|---|---|--------------------|-----------------|
| | | SR-01 Classic Schedule Report - Phase 1 | | |
| Activity ID | Activity Name | Original Duration | Remaining Duration | Level of Effort |
| SR-001 | Design Building Interior | 88 | 0 | 0 |
| SR-002 | Interior Finish Work - Main & 2nd Floor | 18 | 0 | 0 |
| SR-003 | Interior Finish Work - 3rd Floor | 18 | 0 | 0 |
| SR-004 | Interior Finish Work - 4th Floor | 9 | 0 | 0 |
| SR-005 | Interior Finish Work - 5th Floor | 9 | 0 | 0 |
| SR-006 | Interior Finish Work - 6th Floor | 9 | 0 | 0 |
| SR-007 | Interior Finish Work - 7th Floor | 9 | 0 | 0 |
| SR-008 | Interior Finish Work - 8th Floor | 9 | 0 | 0 |
| SR-009 | Interior Finish Work - 9th Floor | 9 | 0 | 0 |
| SR-010 | Interior Finish Work - 10th Floor | 9 | 0 | 0 |
| SR-011 | Interior Finish Work - 11th Floor | 9 | 0 | 0 |
| SR-012 | Interior Finish Work - 12th Floor | 9 | 0 | 0 |
| SR-013 | Interior Finish Work - 13th Floor | 9 | 0 | 0 |
| SR-014 | Interior Finish Work - 14th Floor | 9 | 0 | 0 |
| SR-015 | Interior Finish Work - 15th Floor | 9 | 0 | 0 |
| SR-016 | Interior Finish Work - 16th Floor | 9 | 0 | 0 |
| SR-017 | Interior Finish Work - 17th Floor | 9 | 0 | 0 |
| SR-018 | Interior Finish Work - 18th Floor | 9 | 0 | 0 |
| SR-019 | Interior Finish Work - 19th Floor | 9 | 0 | 0 |
| SR-020 | Interior Finish Work - 20th Floor | 9 | 0 | 0 |
| SR-021 | Interior Finish Work - 21st Floor | 9 | 0 | 0 |
| SR-022 | Interior Finish Work - 22nd Floor | 9 | 0 | 0 |
| SR-023 | Interior Finish Work - 23rd Floor | 9 | 0 | 0 |
| SR-024 | Interior Finish Work - 24th Floor | 9 | 0 | 0 |
| SR-025 | Interior Finish Work - 25th Floor | 9 | 0 | 0 |
| SR-026 | Interior Finish Work - 26th Floor | 9 | 0 | 0 |
| SR-027 | Interior Finish Work - 27th Floor | 9 | 0 | 0 |
| SR-028 | Interior Finish Work - 28th Floor | 9 | 0 | 0 |
| SR-029 | Interior Finish Work - 29th Floor | 9 | 0 | 0 |
| SR-030 | Interior Finish Work - 30th Floor | 9 | 0 | 0 |
| SR-031 | Interior Finish Work - 31st Floor | 9 | 0 | 0 |
| SR-032 | Interior Finish Work - 32nd Floor | 9 | 0 | 0 |
| SR-033 | Interior Finish Work - 33rd Floor | 9 | 0 | 0 |
| SR-034 | Interior Finish Work - 34th Floor | 9 | 0 | 0 |
| SR-035 | Interior Finish Work - 35th Floor | 9 | 0 | 0 |
| SR-036 | Interior Finish Work - 36th Floor | 9 | 0 | 0 |
| SR-037 | Interior Finish Work - 37th Floor | 9 | 0 | 0 |
| SR-038 | Interior Finish Work - 38th Floor | 9 | 0 | 0 |
| SR-039 | Interior Finish Work - 39th Floor | 9 | 0 | 0 |
| SR-040 | Interior Finish Work - 40th Floor | 9 | 0 | 0 |
| SR-041 | Interior Finish Work - 41st Floor | 9 | 0 | 0 |
| SR-042 | Interior Finish Work - 42nd Floor | 9 | 0 | 0 |
| SR-043 | Interior Finish Work - 43rd Floor | 9 | 0 | 0 |
| SR-044 | Interior Finish Work - 44th Floor | 9 | 0 | 0 |
| SR-045 | Interior Finish Work - 45th Floor | 9 | 0 | 0 |
| SR-046 | Interior Finish Work - 46th Floor | 9 | 0 | 0 |
| SR-047 | Interior Finish Work - 47th Floor | 9 | 0 | 0 |
| SR-048 | Interior Finish Work - 48th Floor | 9 | 0 | 0 |
| SR-049 | Interior Finish Work - 49th Floor | 9 | 0 | 0 |
| SR-050 | Interior Finish Work - 50th Floor | 9 | 0 | 0 |
| SR-051 | Interior Finish Work - 51st Floor | 9 | 0 | 0 |
| SR-052 | Interior Finish Work - 52nd Floor | 9 | 0 | 0 |
| SR-053 | Interior Finish Work - 53rd Floor | 9 | 0 | 0 |
| SR-054 | Interior Finish Work - 54th Floor | 9 | 0 | 0 |
| SR-055 | Interior Finish Work - 55th Floor | 9 | 0 | 0 |
| SR-056 | Interior Finish Work - 56th Floor | 9 | 0 | 0 |
| SR-057 | Interior Finish Work - 57th Floor | 9 | 0 | 0 |
| SR-058 | Interior Finish Work - 58th Floor | 9 | 0 | 0 |
| SR-059 | Interior Finish Work - 59th Floor | 9 | 0 | 0 |
| SR-060 | Interior Finish Work - 60th Floor | 9 | 0 | 0 |
| SR-061 | Interior Finish Work - 61st Floor | 9 | 0 | 0 |
| SR-062 | Interior Finish Work - 62nd Floor | 9 | 0 | 0 |
| SR-063 | Interior Finish Work - 63rd Floor | 9 | 0 | 0 |
| SR-064 | Interior Finish Work - 64th Floor | 9 | 0 | 0 |
| SR-065 | Interior Finish Work - 65th Floor | 9 | 0 | 0 |
| SR-066 | Interior Finish Work - 66th Floor | 9 | 0 | 0 |
| SR-067 | Interior Finish Work - 67th Floor | 9 | 0 | 0 |
| SR-068 | Interior Finish Work - 68th Floor | 9 | 0 | 0 |
| SR-069 | Interior Finish Work - 69th Floor | 9 | 0 | 0 |
| SR-070 | Interior Finish Work - 70th Floor | 9 | 0 | 0 |
| SR-071 | Interior Finish Work - 71st Floor | 9 | 0 | 0 |
| SR-072 | Interior Finish Work - 72nd Floor | 9 | 0 | 0 |
| SR-073 | Interior Finish Work - 73rd Floor | 9 | 0 | 0 |
| SR-074 | Interior Finish Work - 74th Floor | 9 | 0 | 0 |
| SR-075 | Interior Finish Work - 75th Floor | 9 | 0 | 0 |
| SR-076 | Interior Finish Work - 76th Floor | 9 | 0 | 0 |
| SR-077 | Interior Finish Work - 77th Floor | 9 | 0 | 0 |
| SR-078 | Interior Finish Work - 78th Floor | 9 | 0 | 0 |
| SR-079 | Interior Finish Work - 79th Floor | 9 | 0 | 0 |
| SR-080 | Interior Finish Work - 80th Floor | 9 | 0 | 0 |
| SR-081 | Interior Finish Work - 81st Floor | 9 | 0 | 0 |
| SR-082 | Interior Finish Work - 82nd Floor | 9 | 0 | 0 |
| SR-083 | Interior Finish Work - 83rd Floor | 9 | 0 | 0 |
| SR-084 | Interior Finish Work - 84th Floor | 9 | 0 | 0 |
| SR-085 | Interior Finish Work - 85th Floor | 9 | 0 | 0 |
| SR-086 | Interior Finish Work - 86th Floor | 9 | 0 | 0 |
| SR-087 | Interior Finish Work - 87th Floor | 9 | 0 | 0 |
| SR-088 | Interior Finish Work - 88th Floor | 9 | 0 | 0 |
| SR-089 | Interior Finish Work - 89th Floor | 9 | 0 | 0 |
| SR-090 | Interior Finish Work - 90th Floor | 9 | 0 | 0 |
| SR-091 | Interior Finish Work - 91st Floor | 9 | 0 | 0 |
| SR-092 | Interior Finish Work - 92nd Floor | 9 | 0 | 0 |
| SR-093 | Interior Finish Work - 93rd Floor | 9 | 0 | 0 |
| SR-094 | Interior Finish Work - 94th Floor | 9 | 0 | 0 |
| SR-095 | Interior Finish Work - 95th Floor | 9 | 0 | 0 |
| SR-096 | Interior Finish Work - 96th Floor | 9 | 0 | 0 |
| SR-097 | Interior Finish Work - 97th Floor | 9 | 0 | 0 |
| SR-098 | Interior Finish Work - 98th Floor | 9 | 0 | 0 |
| SR-099 | Interior Finish Work - 99th Floor | 9 | 0 | 0 |
| SR-100 | Interior Finish Work - 100th Floor | 9 | 0 | 0 |
| SR-101 | Interior Finish Work - 101st Floor | 9 | 0 | 0 |
| SR-102 | Interior Finish Work - 102nd Floor | 9 | 0 | 0 |
| SR-103 | Interior Finish Work - 103rd Floor | 9 | 0 | 0 |
| SR-104 | Interior Finish Work - 104th Floor | 9 | 0 | 0 |
| SR-105 | Interior Finish Work - 105th Floor | 9 | 0 | 0 |
| SR-106 | Interior Finish Work - 106th Floor | 9 | 0 | 0 |
| SR-107 | Interior Finish Work - 107th Floor | 9 | 0 | 0 |
| SR-108 | Interior Finish Work - 108th Floor | 9 | 0 | 0 |
| SR-109 | Interior Finish Work - 109th Floor | 9 | 0 | 0 |
| SR-110 | Interior Finish Work - 110th Floor | 9 | 0 | 0 |
| SR-111 | Interior Finish Work - 111th Floor | 9 | 0 | 0 |
| SR-112 | Interior Finish Work - 112th Floor | 9 | 0 | 0 |
| SR-113 | Interior Finish Work - 113th Floor | 9 | 0 | 0 |
| SR-114 | Interior Finish Work - 114th Floor | 9 | 0 | 0 |
| SR-115 | Interior Finish Work - 115th Floor | 9 | 0 | 0 |
| SR-116 | Interior Finish Work - 116th Floor | 9 | 0 | 0 |
| SR-117 | Interior Finish Work - 117th Floor | 9 | 0 | 0 |
| SR-118 | Interior Finish Work - 118th Floor | 9 | 0 | 0 |
| SR-119 | Interior Finish Work - 119th Floor | 9 | 0 | 0 |
| SR-120 | Interior Finish Work - 120th Floor | 9 | 0 | 0 |
| SR-121 | Interior Finish Work - 121st Floor | 9 | 0 | 0 |
| SR-122 | Interior Finish Work - 122nd Floor | 9 | 0 | 0 |
| SR-123 | Interior Finish Work - 123rd Floor | 9 | 0 | 0 |
| SR-124 | Interior Finish Work - 124th Floor | 9 | 0 | 0 |
| SR-125 | Interior Finish Work - 125th Floor | 9 | 0 | 0 |
| SR-126 | Interior Finish Work - 126th Floor | 9 | 0 | 0 |
| SR-127 | Interior Finish Work - 127th Floor | 9 | 0 | 0 |
| SR-128 | Interior Finish Work - 128th Floor | 9 | 0 | 0 |
| SR-129 | Interior Finish Work - 129th Floor | 9 | 0 | 0 |
| SR-130 | Interior Finish Work - 130th Floor | 9 | 0 | 0 |
| SR-131 | Interior Finish Work - 131st Floor | 9 | 0 | 0 |
| SR-132 | Interior Finish Work - 132nd Floor | 9 | 0 | 0 |
| SR-133 | Interior Finish Work - 133rd Floor | 9 | 0 | 0 |
| SR-134 | Interior Finish Work - 134th Floor | 9 | 0 | 0 |
| SR-135 | Interior Finish Work - 135th Floor | 9 | 0 | 0 |
| SR-136 | Interior Finish Work - 136th Floor | 9 | 0 | 0 |
| SR-137 | Interior Finish Work - 137th Floor | 9 | 0 | 0 |
| SR-138 | Interior Finish Work - 138th Floor | 9 | 0 | 0 |
| SR-139 | Interior Finish Work - 139th Floor | 9 | 0 | 0 |
| SR-140 | Interior Finish Work - 140th Floor | 9 | 0 | 0 |
| SR-141 | Interior Finish Work - 141st Floor | 9 | 0 | 0 |
| SR-142 | Interior Finish Work - 142nd Floor | 9 | 0 | 0 |
| SR-143 | Interior Finish Work - 143rd Floor | 9 | 0 | 0 |
| SR-144 | Interior Finish Work - 144th Floor | 9 | 0 | 0 |
| SR-145 | Interior Finish Work - 145th Floor | 9 | 0 | 0 |
| SR-146 | Interior Finish Work - 146th Floor | 9 | 0 | 0 |
| SR-147 | Interior Finish Work - 147th Floor | 9 | 0 | 0 |
| SR-148 | Interior Finish Work - 148th Floor | 9 | 0 | 0 |
| SR-149 | Interior Finish Work - 149th Floor | 9 | 0 | 0 |
| SR-150 | Interior Finish Work - 150th Floor | 9 | 0 | 0 |
| SR-151 | Interior Finish Work - 151st Floor | 9 | 0 | 0 |
| SR-152 | Interior Finish Work - 152nd Floor | 9 | 0 | 0 |
| SR-153 | Interior Finish Work - 153rd Floor | 9 | 0 | 0 |
| SR-154 | Interior Finish Work - 154th Floor | 9 | 0 | 0 |
| SR-155 | Interior Finish Work - 155th Floor | 9 | 0 | 0 |
| SR-156 | Interior Finish Work - 156th Floor | 9 | 0 | 0 |
| SR-157 | Interior Finish Work - 157th Floor | 9 | 0 | 0 |
| SR-158 | Interior Finish Work - 158th Floor | 9 | 0 | 0 |
| SR-159 | Interior Finish Work - 159th Floor | 9 | 0 | 0 |
| SR-160 | Interior Finish Work - 160th Floor | 9 | 0 | 0 |
| SR-161 | Interior Finish Work - 161st Floor | 9 | 0 | 0 |
| SR-162 | Interior Finish Work - 162nd Floor | 9 | 0 | 0 |
| SR-163 | Interior Finish Work - 163rd Floor | 9 | 0 | 0 |
| SR-164 | Interior Finish Work - 164th Floor | 9 | 0 | 0 |
| SR-165 | Interior Finish Work - 165th Floor | 9 | 0 | 0 |
| SR-166 | Interior Finish Work - 166th Floor | 9 | 0 | 0 |
| SR-167 | Interior Finish Work - 167th Floor | 9 | 0 | 0 |
| SR-168 | Interior Finish Work - 168th Floor | 9 | 0 | 0 |
| SR-169 | Interior Finish Work - 169th Floor | 9 | 0 | 0 |
| SR-170 | Interior Finish Work - 170th Floor | 9 | 0 | 0 |
| SR-171 | Interior Finish Work - 171st Floor | 9 | 0 | 0 |
| SR-172 | Interior Finish Work - 172nd Floor | 9 | 0 | 0 |
| SR-173 | Interior Finish Work - 173rd Floor | 9 | 0 | 0 |
| SR-174 | Interior Finish Work - 174th Floor | 9 | 0 | 0 |
| SR-175 | Interior Finish Work - 175th Floor | 9 | 0 | 0 |
| SR-176 | Interior Finish Work - 176th Floor | 9 | 0 | 0 |
| SR-177 | Interior Finish Work - 177th Floor | 9 | 0 | 0 |
| SR-178 | Interior Finish Work - 178th Floor | 9 | 0 | 0 |
| SR-179 | Interior Finish Work - 179th Floor | 9 | 0 | 0 |
| SR-180 | Interior Finish Work - 180th Floor | 9 | 0 | 0 |
| SR-181 | Interior Finish Work - 181st Floor | 9 | 0 | 0 |
| SR-182 | Interior Finish Work - 182nd Floor | 9 | 0 | 0 |
| SR-183 | Interior Finish Work - 183rd Floor | 9 | 0 | 0 |
| SR-184 | Interior Finish Work - 184th Floor | 9 | 0 | 0 |
| SR-185 | Interior Finish Work - 185th Floor | 9 | 0 | 0 |
| SR-186 | Interior Finish Work - 186th Floor | 9 | 0 | 0 |
| SR-187 | Interior Finish Work - 187th Floor | 9 | 0 | 0 |
| SR-188 | Interior Finish Work - 188th Floor | 9 | 0 | 0 |
| SR-189 | Interior Finish Work - 189th Floor | 9 | 0 | 0 |
| SR-190 | Interior Finish Work - 190th Floor | 9 | 0 | 0 |
| SR-191 | Interior Finish Work - 191st Floor | 9 | 0 | 0 |
| SR-192 | Interior Finish Work - 192nd Floor | 9 | 0 | 0 |
| SR-193 | Interior Finish Work - 193rd Floor | 9 | 0 | 0 |
| SR-194 | Interior Finish Work - 194th Floor | 9 | 0 | 0 |
| SR-195 | Interior Finish Work - 195th Floor | 9 | 0 | 0 |
| SR-196 | Interior Finish Work - 196th Floor | 9 | 0 | 0 |
| SR-197 | Interior Finish Work - 197th Floor | 9 | 0 | 0 |
| SR-198 | Interior Finish Work - 198th Floor | 9 | 0 | 0 |
| SR-199 | Interior Finish Work - 199th Floor | 9 | 0 | 0 |
| SR-200 | Interior Finish Work - 200th Floor | 9 | 0 | 0 |
| SR-201 | Interior Finish Work - 201st Floor | 9 | 0 | 0 |
| SR-202 | Interior Finish Work - 202nd Floor | 9 | 0 | 0 |
| SR-203 | Interior Finish Work - 203rd Floor | 9 | 0 | 0 |
| SR-204 | Interior Finish Work - 204th Floor | 9 | 0 | 0 |
| SR-205 | Interior Finish Work - 205th Floor | 9 | 0 | 0 |
| SR-206 | Interior Finish Work - 206th Floor | 9 | 0 | 0 |
| SR-207 | Interior Finish Work - 207th Floor | 9 | 0 | 0 |
| SR-208 | Interior Finish Work - 208th Floor | 9 | 0 | 0 |
| SR-209 | Interior Finish Work - 209th Floor | 9 | 0 | 0 |
| SR-210 | Interior Finish Work - 210th Floor | 9 | 0 | 0 |
| SR-211 | Interior Finish Work - 211st Floor | 9 | 0 | 0 |
| SR-212 | Interior Finish Work - 212nd Floor | 9 | 0 | 0 |
| SR-213 | Interior Finish Work - 213rd Floor | 9 | 0 | 0 |
| SR-214 | Interior Finish Work - 214th Floor | 9 | 0 | 0 |
| SR-215 | Interior Finish Work - 215th Floor | 9 | 0 | 0 |
| SR-216 | Interior Finish Work - 216th Floor | 9 | 0 | 0 |
| SR-217 | Interior Finish Work - 217th Floor | 9 | 0 | 0 |
| SR-218 | Interior Finish Work - 218th Floor | 9 | 0 | 0 |
| SR-219 | Interior Finish Work - 219th Floor | 9 | 0 | 0 |
| SR-220 | Interior Finish Work - 220th Floor | 9 | 0 | 0 |
| SR-221 | Interior Finish Work - 221st Floor | 9 | 0 | 0 |
| SR-222 | Interior Finish Work - 222nd Floor | 9 | 0 | 0 |
| SR-223 | Interior Finish Work - 223rd Floor | 9 | 0 | 0 |
| SR-224 | Interior Finish Work - 224th Floor | 9 | 0 | 0 |
| SR-225 | Interior Finish Work - 225th Floor | 9 | 0 | 0 |
| SR-226 | Interior Finish Work - 226th Floor | 9 | 0 | 0 |
| SR-227 | Interior Finish Work - 227th Floor | 9 | 0 | 0 |
| SR-228 | Interior Finish Work - 228th Floor | 9 | 0 | 0 |
| SR-229 | Interior Finish Work - 229th Floor | 9 | 0 | 0 |
| SR-230 | Interior Finish Work - 230th Floor | 9 | 0 | 0 |
| SR-231 | Interior Finish Work - 231st Floor | 9 | 0 | 0 |
| SR-232 | Interior Finish Work - 232nd Floor | 9 | 0 | 0 |
| SR-233 | Interior Finish Work - 233rd Floor | 9 | 0 | 0 |
| SR-234 | Interior Finish Work - 234th Floor | 9 | 0 | 0 |
| SR-235 | Interior Finish Work - 235th Floor | 9 | 0 | 0 |
| SR-236 | Interior Finish Work - 236th Floor | 9 | 0 | 0 |
| SR-237 | Interior Finish Work - 237th Floor | 9 | 0 | 0 |
| SR-238 | Interior Finish Work - 238th Floor | 9 | 0 | 0 |
| SR-239 | Interior Finish Work - 239th Floor | 9 | 0 | 0 |
| SR-240 | Interior Finish Work - 240th Floor | 9 | 0 | 0 |
| SR-241 | Interior Finish Work - 241st Floor | 9 | 0 | 0 |
| SR-242 | Interior Finish Work - 242nd Floor | 9 | 0 | 0 |
| SR-243 | Interior Finish Work - 243rd Floor | 9 | 0 | 0 |
| SR-244 | Interior Finish Work - 244th Floor | 9 | 0 | 0 |
| SR-245 | Interior Finish Work - 245th Floor | 9 | 0 | 0 |
| SR-246 | Interior Finish Work - 246th Floor | 9 | 0 | 0 |
| SR-247 | Interior Finish Work - 247th Floor | 9 | 0 | 0 |
| SR-248 | Interior Finish Work - 248th Floor | 9 | 0 | 0 |
| SR-249 | Interior Finish Work - 249th Floor | 9 | 0 | 0 |
| SR-250 | Interior Finish Work - 250th Floor | 9 | 0 | 0 |
| SR-251 | Interior Finish Work - 251st Floor | 9 | 0 | 0 |
| SR-252 | Interior Finish Work - 252nd Floor | 9 | 0 | 0 |
| SR-253 | Interior Finish Work - 253rd Floor | 9 | 0 | 0 |
| SR-254 | Interior Finish Work - 254th Floor | 9 | 0 | 0 |
| SR-255 | Interior Finish Work - 255th Floor | 9 | 0 | 0 |
| SR-256 | Interior Finish Work - 256th Floor | 9 | 0 | 0 |
| SR-257 | Interior Finish Work - 257th Floor | 9 | 0 | 0 |
| SR-258 | Interior Finish Work - 258th Floor | 9 | 0 | 0 |
| SR-259 | Interior Finish Work - 259th Floor | 9 | 0 | 0 |
| SR-260 | Interior Finish Work - 260th Floor | 9 | 0 | 0 |
| SR-261 | Interior Finish Work - 261st Floor | 9 | 0 | 0 |
| SR-262 | Interior Finish Work - 262nd Floor | 9 | 0 | 0 |
| SR-263 | Interior Finish Work - 263rd Floor | 9 | 0 | 0 |
| SR-2 | | | | |

City Center Office Building Addition
Report Date 09-Jun-14 16:45

Project Start 01-Nov-10
Project Finish 30-Jun-13

RL03 Resource Cost Loading, Monthly, Organized by WBS

WBS

Resource ID Name

| Activity Name | Cost 01-Mar-11, 01-Aug-11 | Mar. 2011 | Apr. 2011 | May 2011 | Jun. 2011 | Jul. 2011 | Aug. 2011 | Period Total |
|---------------|---------------------------------|-----------|-----------|----------|-----------|-----------|-----------|--------------|
|---------------|---------------------------------|-----------|-----------|----------|-----------|-----------|-----------|--------------|

EC00045.DME Design and Engineering

Staff

| | | | | | | | | |
|--|-----------|------------|------------|--|--|--|--|-------------|
| Person and Appointee Design | Actual | | | | | | | \$0.00 |
| | Remaining | | | | | | | \$0.00 |
| Design Building Addition | Actual | | | | | | | \$0.00 |
| | Remaining | | | | | | | \$0.00 |
| Appointee Technical Data for Heat Pump | Actual | | | | | | | \$0.00 |
| | Remaining | | | | | | | \$0.00 |
| Review Technical Data on Heat Pumps | Actual | \$8,793.17 | \$1,337.24 | | | | | \$10,130.41 |
| | | | | | | | | \$0.00 |
| | Remaining | | | | | | | \$0.00 |
| Design Building Addition | Actual | | | | | | | \$0.00 |
| | Remaining | | | | | | | \$0.00 |
| | | | | | | | | \$0.00 |
| Subtotal | Actual | \$8,793.17 | \$1,337.24 | | | | | \$10,130.41 |
| | Remaining | | | | | | | \$0.00 |

Subtotal

| | | | | | | | | |
|--|-----------|------------|------------|--|--|--|--|-------------|
| | Actual | \$8,793.17 | \$1,337.24 | | | | | \$10,130.41 |
| | Remaining | | | | | | | \$0.00 |

EC00045.Found Foundation

Operator

| | | | | | | | | |
|-----------------------------|--------|--|--|--|--|--|--|--------|
| Form-Pour Concrete Footings | Actual | | | | | | | \$0.00 |
|-----------------------------|--------|--|--|--|--|--|--|--------|

Page 1 of 21

- P6 Professional includes a built in report writer that provides printed reports from P6. This technical webinar will focus on the use of P6's built in report writer to produce cost, schedule, resource and other types of reports directly from P6 Professional. We will explore the different types of reports and out-put methods to provide a short training session on this function in P6 Pro.



Agenda – P6 Report Writer

- Review Reporting Methods
- Run a Report
- Create a Predecessor/Successor Report with Report Wizard
- Export a Time-Distributed Report to Excel
- Using the Report Editor
- Create a report using a P6 Layout
- Tips and tricks
- Summary

Reporting Methods

P6 Professional 8.3

- Layouts – *these are “reports” printed from the P6 Activity Window using the Activity Table and/or the Activity Usage Spreadsheet.*
- Report Wizard – *accessed within the P6 Pro Reports Window this function walks you through the process of building new and modifying existing reports.*
- Report Editor – *accessed within the P6 Pro Reports Window this function allows you to directly modify existing reports in a report layout format.*
- BI Publisher – *not provided with P6 Pro license but still capable of accessing P6 reporting database (as will any third party report writer) to create tabular and graphic reports.*



Layout Report

Create in the P6 Pro Layout Window

| City Center Office Building Addition | | | | | | | | | |
|--------------------------------------|--|-----------------|------------------|----------------|---------------------|--------------------------|--------------------------|------------------------------------|--|
| Costs - Actual | | | | | | | | | |
| 06-Jun-14 15:58 | | | | | | | | | |
| Activity ID | Activity Name | Original Budget | Approved Changes | Current Budget | Actual Cost To Date | Estimated Remaining Cost | At Completion Total Cost | Over (+) / Under (-) at Completion | |
| EC00515 | | \$734,195.20 | \$427,833.60 | \$1,162,028.80 | \$212,023.12 | \$1,003,490.80 | \$1,215,513.92 | \$53,485.12 | |
| EC00515.D&E | | \$51,840.00 | \$27,936.00 | \$79,776.00 | \$117,120.00 | \$0.00 | \$117,120.00 | \$37,344.00 | |
| EC 1000 | Design Building Addition | \$26,496.00 | \$26,496.00 | \$52,992.00 | \$89,100.00 | \$0.00 | \$89,100.00 | \$36,108.00 | |
| EC 1010 | Start Office Building Addition Project | \$0.00 | \$0.00 | \$0.00 | \$0.00 | \$0.00 | \$0.00 | \$0.00 | |
| EC 1030 | Review and Approve Designs | \$10,368.00 | \$0.00 | \$10,368.00 | \$11,820.00 | \$0.00 | \$11,820.00 | \$1,452.00 | |
| EC 1050 | Assemble Technical Data for Heat Pump | \$3,456.00 | \$0.00 | \$3,456.00 | \$3,900.00 | \$0.00 | \$3,900.00 | \$444.00 | |
| EC 1160 | Review Technical Data on Heat Pumps | \$11,520.00 | \$1,440.00 | \$12,960.00 | \$12,300.00 | \$0.00 | \$12,300.00 | (\$660.00) | |
| EC00515.Found | | \$135,324.80 | \$109,132.80 | \$244,457.60 | \$21,350.00 | \$220,265.60 | \$241,615.60 | (\$2,842.00) | |
| EC 1090 | Begin Building Construction | \$0.00 | \$0.00 | \$0.00 | \$0.00 | \$0.00 | \$0.00 | \$0.00 | |
| EC 1100 | Site Preparation | \$24,192.00 | \$0.00 | \$24,192.00 | \$21,350.00 | \$0.00 | \$21,350.00 | (\$2,842.00) | |
| EC 1230 | Excavation | \$13,440.00 | \$13,440.00 | \$26,880.00 | \$0.00 | \$26,880.00 | \$26,880.00 | \$0.00 | |
| EC 1320 | Install Underground Water Lines | \$5,280.00 | \$5,280.00 | \$10,560.00 | \$0.00 | \$10,560.00 | \$10,560.00 | \$0.00 | |
| EC 1330 | Install Underground Electric Conduit | \$9,120.00 | \$9,120.00 | \$18,240.00 | \$0.00 | \$18,240.00 | \$18,240.00 | \$0.00 | |
| EC 1340 | Form/Pour Concrete Footings | \$31,520.00 | \$30,720.00 | \$62,240.00 | \$0.00 | \$62,240.00 | \$62,240.00 | \$0.00 | |
| EC 1350 | Concrete Foundation Walls | \$26,720.00 | \$25,920.00 | \$52,640.00 | \$0.00 | \$52,640.00 | \$52,640.00 | \$0.00 | |
| EC 1360 | Form and Pour Slab | \$19,792.00 | \$19,392.00 | \$39,184.00 | \$0.00 | \$39,184.00 | \$39,184.00 | \$0.00 | |
| EC 1370 | Backfill and Compact Walls | \$5,260.00 | \$5,260.00 | \$10,521.60 | \$0.00 | \$10,521.60 | \$10,521.60 | \$0.00 | |
| EC 1380 | Foundation Phase Complete | \$0.00 | \$0.00 | \$0.00 | \$0.00 | \$0.00 | \$0.00 | \$0.00 | |
| EC00515.Structure | | \$153,024.00 | \$50,688.00 | \$203,712.00 | \$0.00 | \$203,712.00 | \$203,712.00 | \$0.00 | |
| EC 1390 | Erect Structural Frame | \$22,720.00 | \$21,120.00 | \$43,840.00 | \$0.00 | \$43,840.00 | \$43,840.00 | \$0.00 | |
| EC 1410 | Begin Structural Phase | \$0.00 | \$0.00 | \$0.00 | \$0.00 | \$0.00 | \$0.00 | \$0.00 | |
| EC 1420 | Floor Decking | \$15,904.00 | \$29,568.00 | \$45,472.00 | \$0.00 | \$45,472.00 | \$45,472.00 | \$0.00 | |
| EC 1430 | Concrete First Floor | \$30,288.00 | \$0.00 | \$30,288.00 | \$0.00 | \$30,288.00 | \$30,288.00 | \$0.00 | |
| EC 1460 | Erect Stairwell and Elevator Walls | \$6,720.00 | \$0.00 | \$6,720.00 | \$0.00 | \$6,720.00 | \$6,720.00 | \$0.00 | |
| EC 1470 | Concrete Basement Slab | \$47,104.00 | \$0.00 | \$47,104.00 | \$0.00 | \$47,104.00 | \$47,104.00 | \$0.00 | |
| EC 1480 | Concrete Second Floor | \$30,288.00 | \$0.00 | \$30,288.00 | \$0.00 | \$30,288.00 | \$30,288.00 | \$0.00 | |
| EC 1540 | Structure Complete | \$0.00 | \$0.00 | \$0.00 | \$0.00 | \$0.00 | \$0.00 | \$0.00 | |
| EC00515.Mechanicals | | \$184,232.00 | \$141,849.60 | \$326,081.60 | \$8,243.12 | \$321,065.60 | \$329,308.72 | \$3,227.12 | |
| EC 1490 | Rough-In Phase Begins | \$0.00 | \$0.00 | \$0.00 | \$0.00 | \$0.00 | \$0.00 | \$0.00 | |
| EC 1690 | Rough In Complete | \$0.00 | \$0.00 | \$0.00 | \$0.00 | \$0.00 | \$0.00 | \$0.00 | |
| EC00515.Mechanicals.Lifts | | \$6,048.00 | \$2,016.00 | \$8,064.00 | \$0.00 | \$8,064.00 | \$8,064.00 | \$0.00 | |
| EC 1520 | Install Elevator Rails and Equipment | \$2,016.00 | \$2,016.00 | \$4,032.00 | \$0.00 | \$4,032.00 | \$4,032.00 | \$0.00 | |
| EC 1710 | Install Elevator Cab and Finishes | \$4,032.00 | \$0.00 | \$4,032.00 | \$0.00 | \$4,032.00 | \$4,032.00 | \$0.00 | |
| EC00515.Mechanicals.HVAC | | \$125,568.00 | \$109,497.60 | \$235,065.60 | \$8,243.12 | \$230,049.60 | \$238,292.72 | \$3,227.12 | |
| EC 1190 | Prepare and Solicit Bids for Heat Pump | \$3,168.00 | \$3,168.00 | \$6,336.00 | \$8,243.12 | \$1,320.00 | \$9,563.12 | \$3,227.12 | |

© Primavera Systems, Inc.

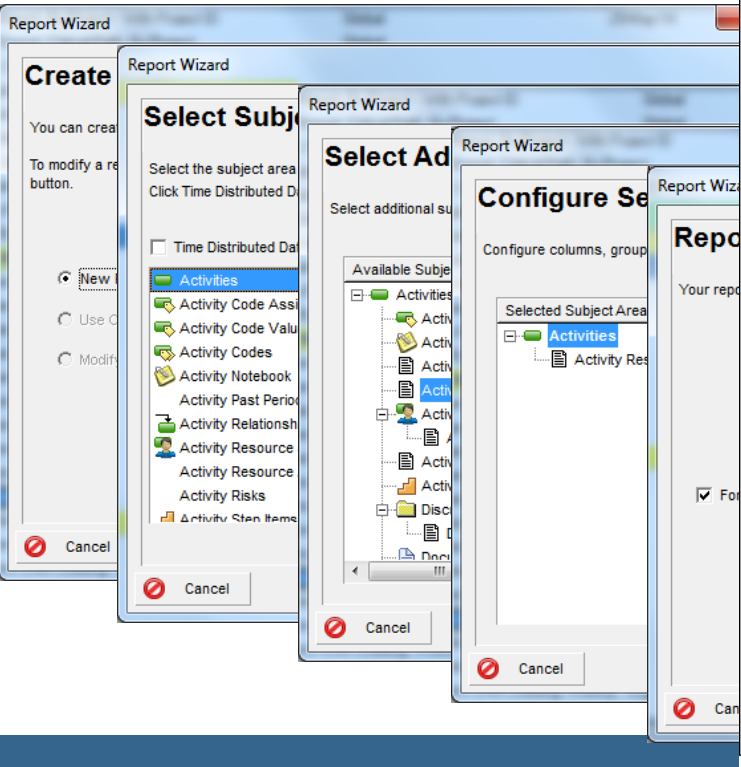
Page 1 of 6

- Layout uses only the Activity Table.
- User Defined Fields and Global Change can be used to create, populate and manage new columns.
- Use P6 Group & Sort function to organize, sort and subtotal the report.
- Can also be used to create a tabular report.



Report Wizard

Add a new report



City Center Office Building Addition
Report Date 07-Jun-14 14:07

Start Date 01-Nov-10
Finish Date 03-Jul-13

RC-01 Resource Control Report

User's Notes

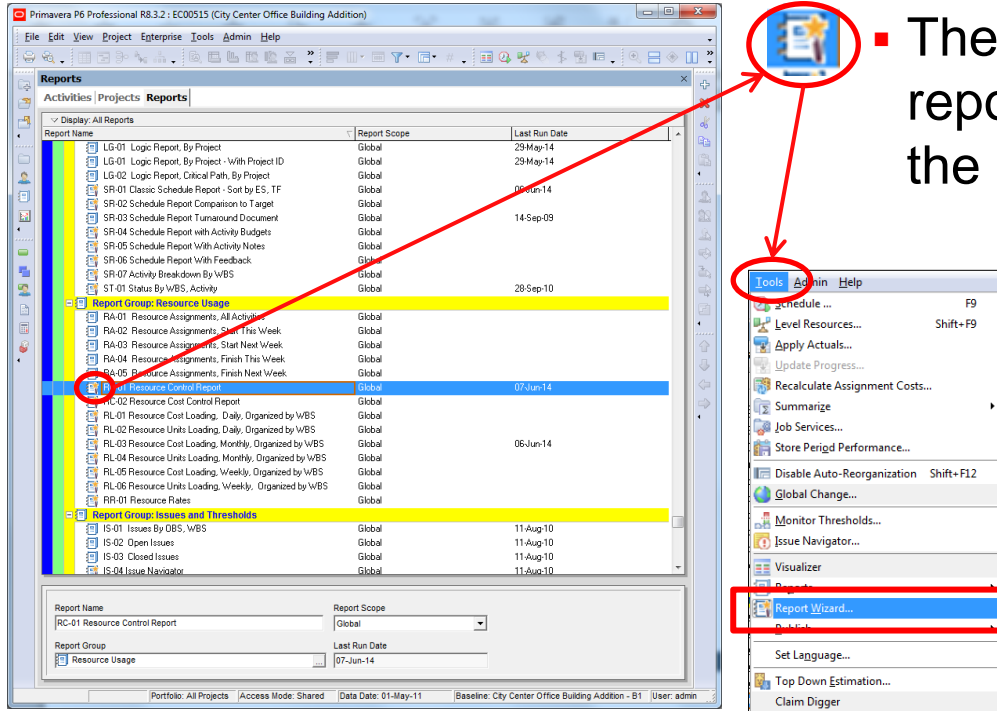
| Resource | Activity ID | Cost Account | Budgeted Units | Units % Complete | Actual Units | Remaining Early Units | At Completion Units |
|--------------------------|-------------|--------------|----------------|------------------|--------------|-----------------------|---------------------|
| E&C Resources | | | | | | | |
| Trades | | | | | | | |
| Operator | | | | | | | |
| | EC1340 | 00800 | 192 | 0% | 0 | 192 | 192 |
| | EC1650 | 00800 | 96 | 0% | 0 | 96 | 96 |
| | EC1680 | 00800 | 19 | 0% | 0 | 19 | 19 |
| | EC1830 | 00800 | 19 | 0% | 0 | 19 | 19 |
| | EC1440 | 00800 | 288 | 0% | 0 | 288 | 288 |
| | EC1670 | 00800 | 19 | 0% | 0 | 19 | 19 |
| | EC1830 | 00800 | 19 | 0% | 0 | 19 | 19 |
| | EC1340 | 00800 | 192 | 0% | 0 | 192 | 192 |
| Subtotal | | | 845 | 0% | 0 | 845 | 845 |
| Elec | | | | | | | |
| Electrician | | | | | | | |
| | EC1330 | 00800 | 96 | 0% | 0 | 96 | 96 |
| | EC1640 | 00800 | 288 | 0% | 0 | 288 | 288 |
| | EC1780 | 00800 | 58 | 0% | 0 | 58 | 58 |
| | EC1670 | 00800 | 58 | 0% | 0 | 58 | 58 |
| | EC1640 | 00800 | 288 | 0% | 0 | 288 | 288 |
| | EC1330 | 00800 | 96 | 0% | 0 | 96 | 96 |
| Subtotal | | | 883 | 0% | 0 | 883 | 883 |
| Paint | | | | | | | |
| Painter | | | | | | | |

Oracle Primavera

Page 1 of 8

Report Wizard

Modify existing report



- The “magic wand” indicates the report was originally created with the “Report Wizard”.

- Use “Tools, Report Wizard” to modify the report using the Report Wizard.



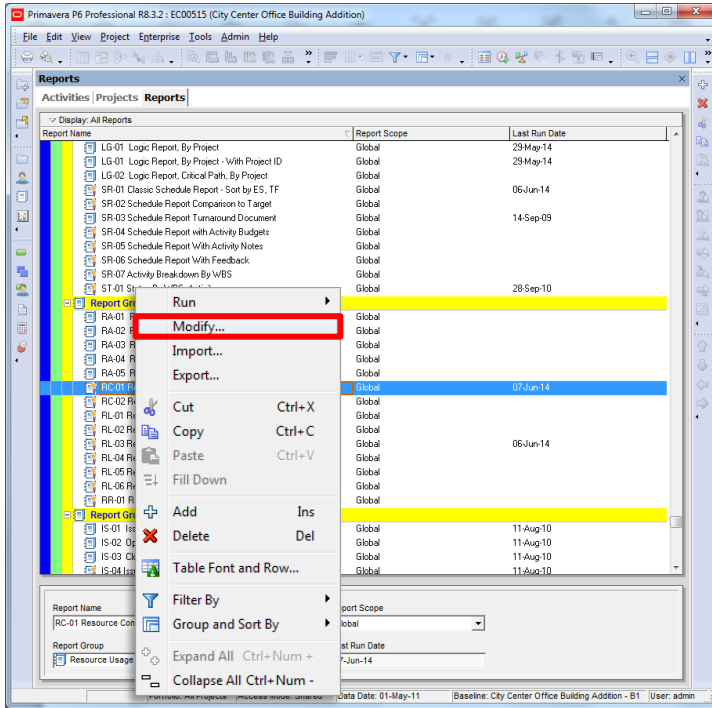
The Report Wizard

Summary

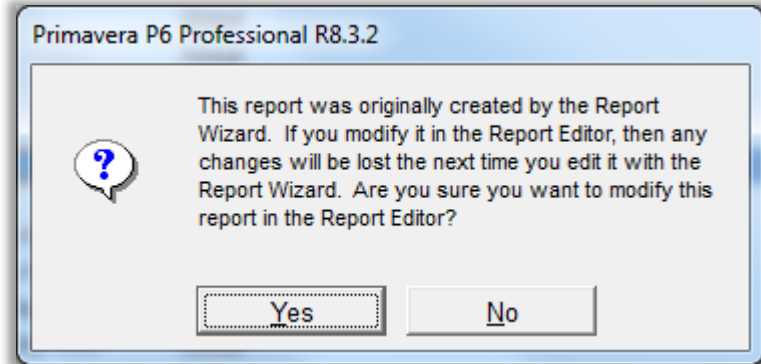
- Not available in P6 EPPM
- Enables you to quickly create or modify a wide variety of reports
- Save the report(s) for future use.
- Import and export reports to share with other users
- To modify an existing report, make a copy first
- Report Wizard will only modify reports that were created with the Report Wizard (📄🌟)

Report Editor

Allows you to modify an existing report in a report editor

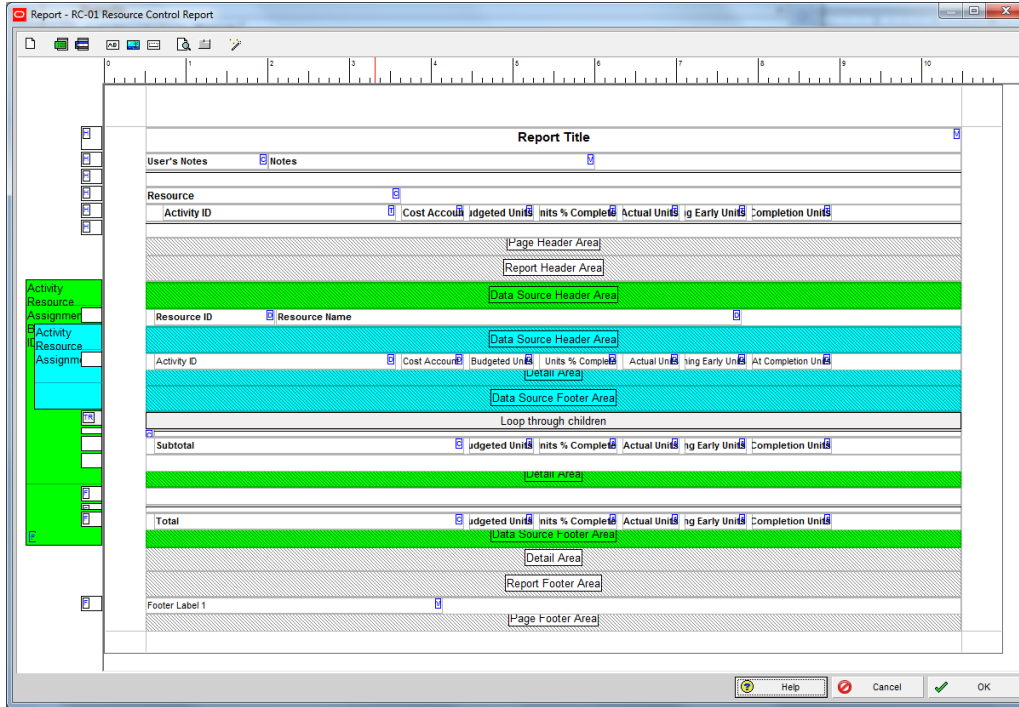


- Right click on a Report and select “Modify” to edit an existing report using the Report Editor.



Report Editor

First question: “do you really want to be here?”



- The P6 Report Editor is a traditional report layout screen that allows you to change most any element of the report.
- This environment, like any report editor, requires a certain amount of training to be useful.

The Report Editor

Summary

- Report Editor allows you to work with the entire “page”.
- More traditional format similar to other third party report writers.
- You need to be familiar with database structure and SQL commands.
- You need to be familiar with database terminology.
- Requires a higher level of expertise than the Report Wizard.
- Provides a higher level of specific control than the Report Wizard.
- You can use most third party report writers with P6 database
 - Crystal, Access, SQL Report Writer...



BI Publisher

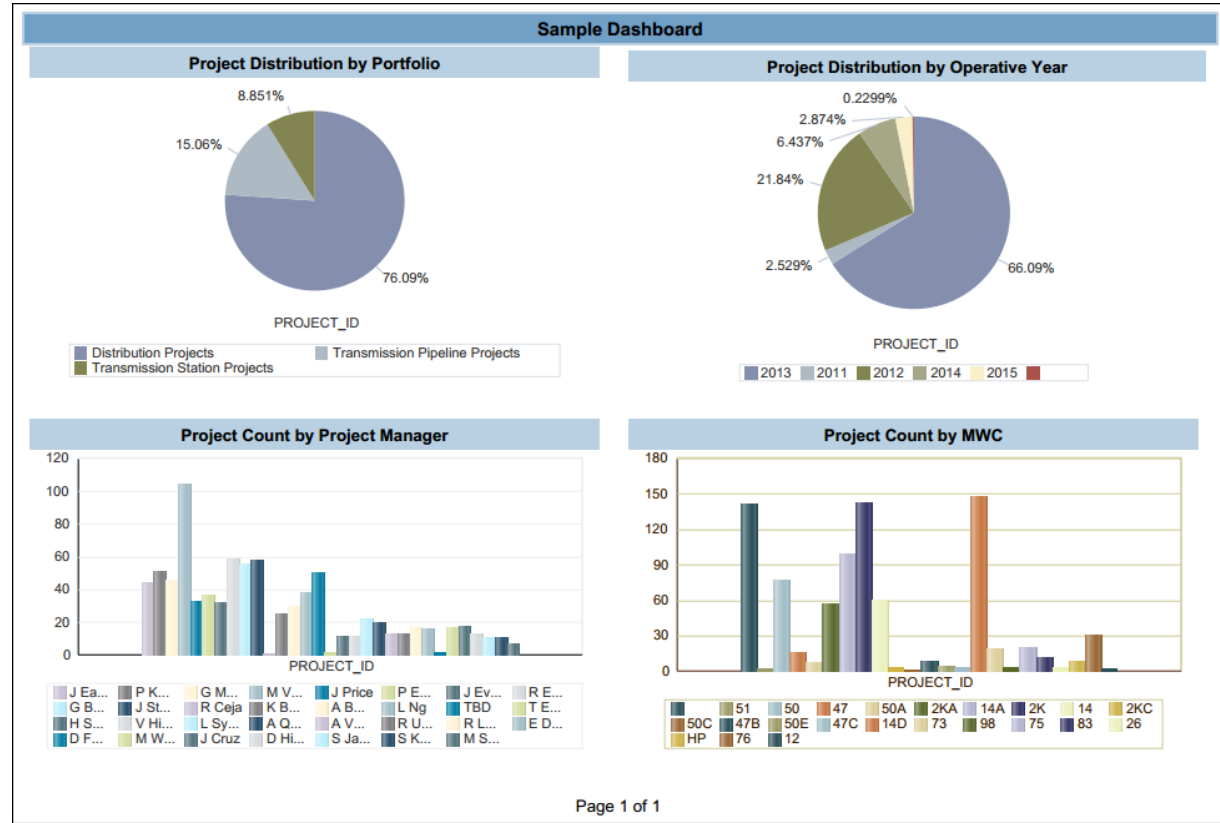
Or almost any 3rd party report writer...

- Oracle Business Intelligence (BI) Publisher
- Requires a dedicated server to handle all print jobs
- BI Versions
 - Web Interface
 - BI Desktop (local install using Word)
- Requires a BI Developer license
- Complex designs (graphics) require thorough SQL syntax understanding

BI Publisher

Example

- Graphics
- Tabular reports
- Can execute real time from a browser
- Not built into P6 Pro
- Optional with P6 EPPM





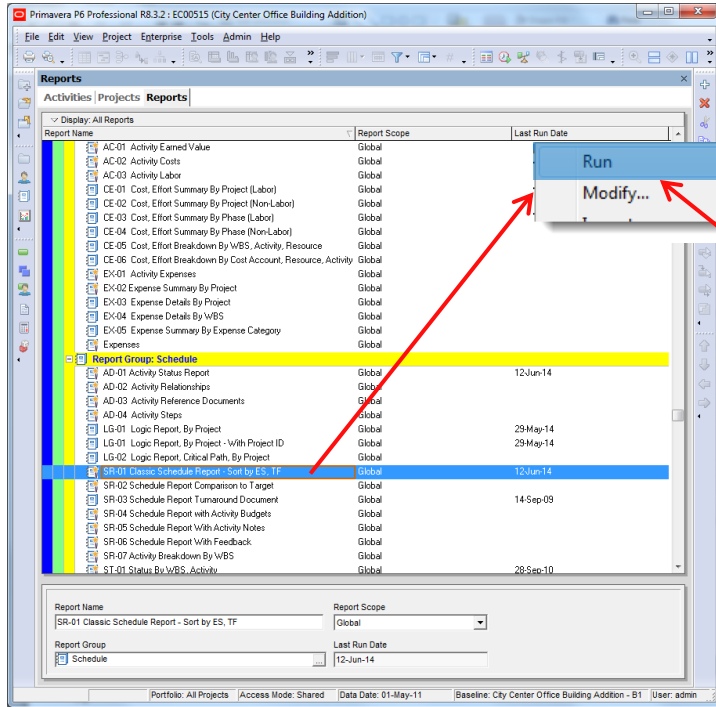
P6 Professional Reports

Examples

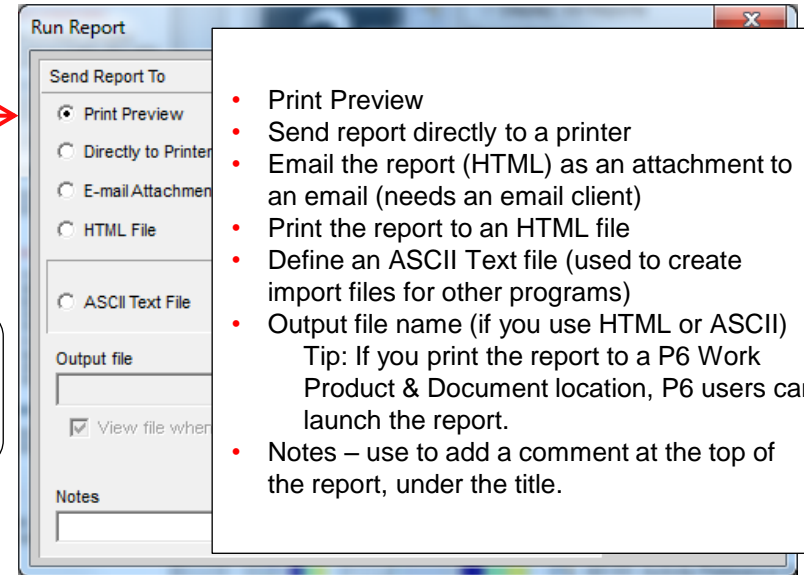
- Run an existing report
- Use the Report Wizard to create a Pred/Succ Report
- Use the Report Wizard to export a time-distributed report to Excel
- Create a Report from an existing P6 Layout

Running an Existing Report

P6 Professional Reports Window



Right-click on the
report,
Click on *Run*,
Report



- Print Preview
- Send report directly to a printer
- Email the report (HTML) as an attachment to an email (needs an email client)
- Print the report to an HTML file
- Define an ASCII Text file (used to create import files for other programs)
- Output file name (if you use HTML or ASCII)
 - Tip: If you print the report to a P6 Work Product & Document location, P6 users can launch the report.
- Notes – use to add a comment at the top of the report, under the title.

Running an Existing Report

Print Preview

Page Setup: Define the report's header/footer, margins and orientation

Print Setup: Select default printer, print size

Print the selected report

Publish to HTML

Navigation

Zoom

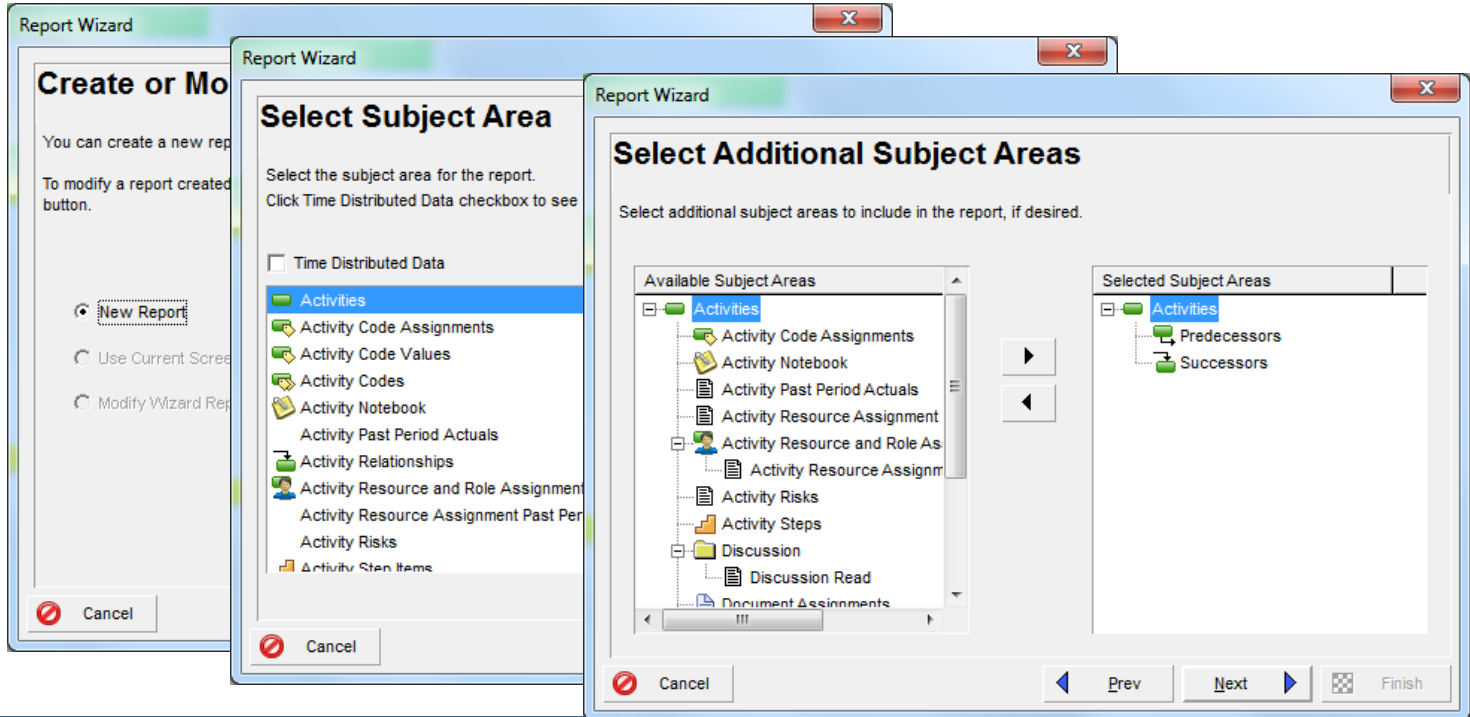
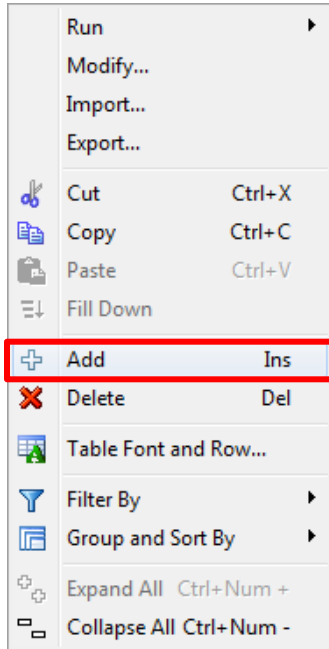
Help

Close

| | | Latest Finish | Total Float |
|-----------|--|---------------|-------------|
| 02-May-11 | | | |
| 09-Oct-12 | | | |
| 09-Oct-12 | | | |
| 02-May-11 | | | |
| 02-May-11 | | | |

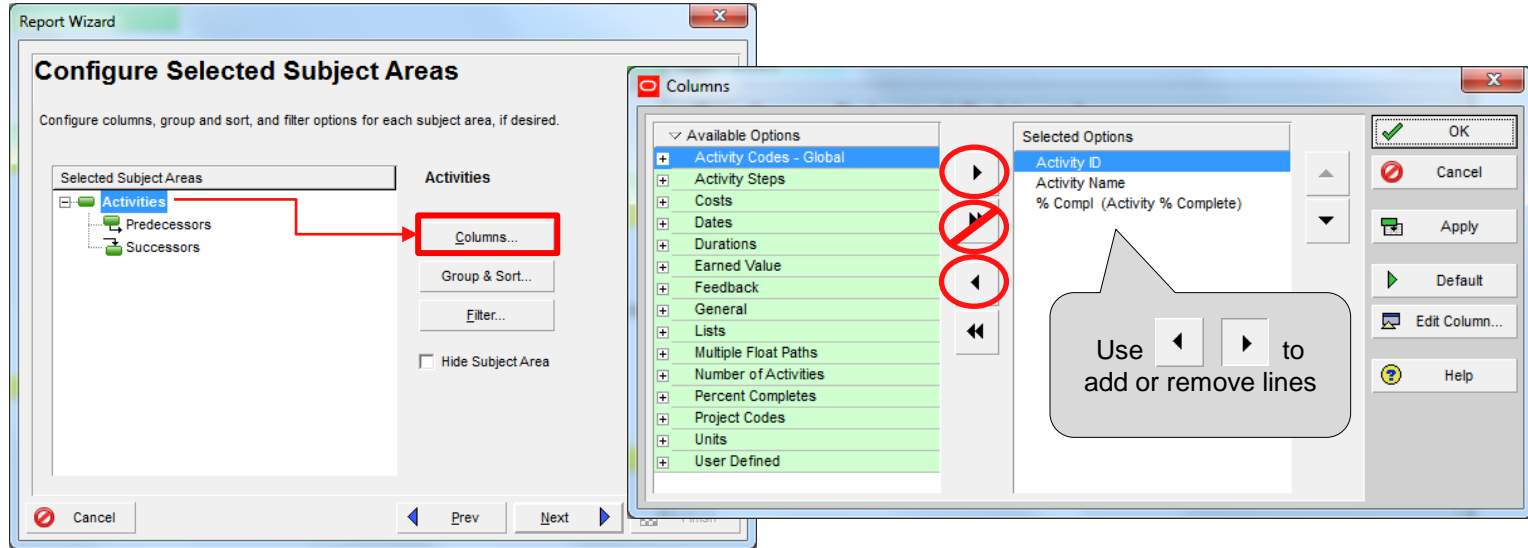
Relationship Report with the Report Wizard

Open at least one project and go to the Report Window



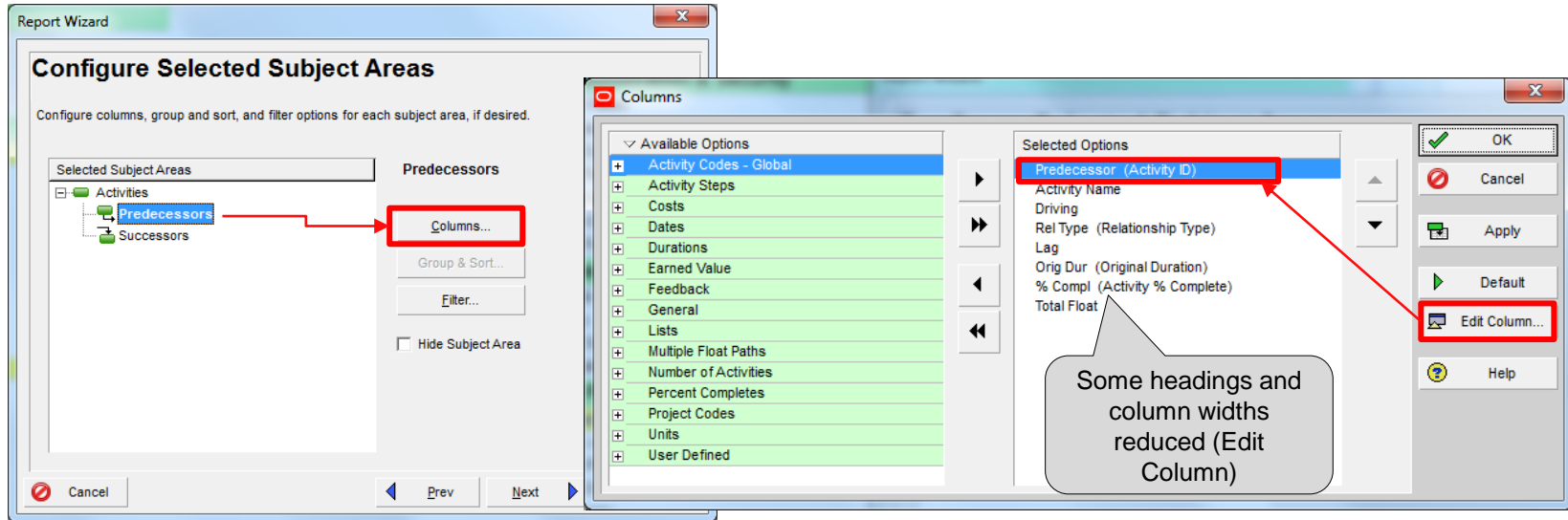
Relationship Report with the Report Wizard

Click the Columns button to define Activity Columns



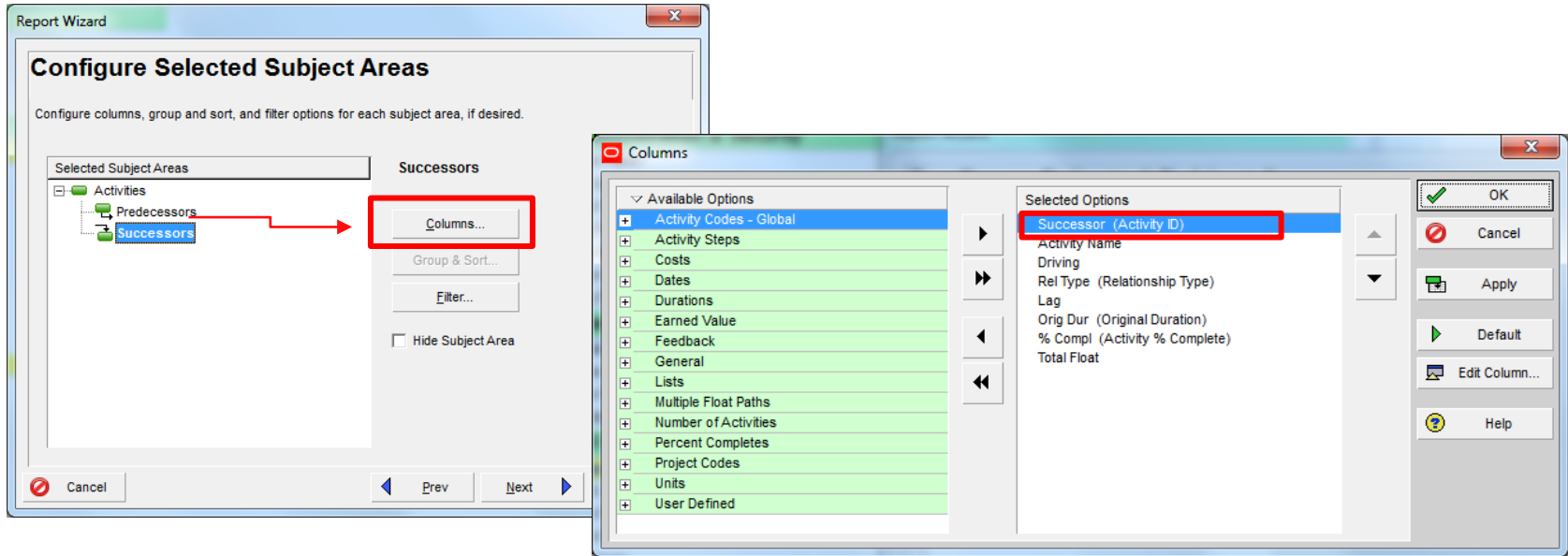
Relationship Report with the Report Wizard

Next, set the columns for the Predecessor line



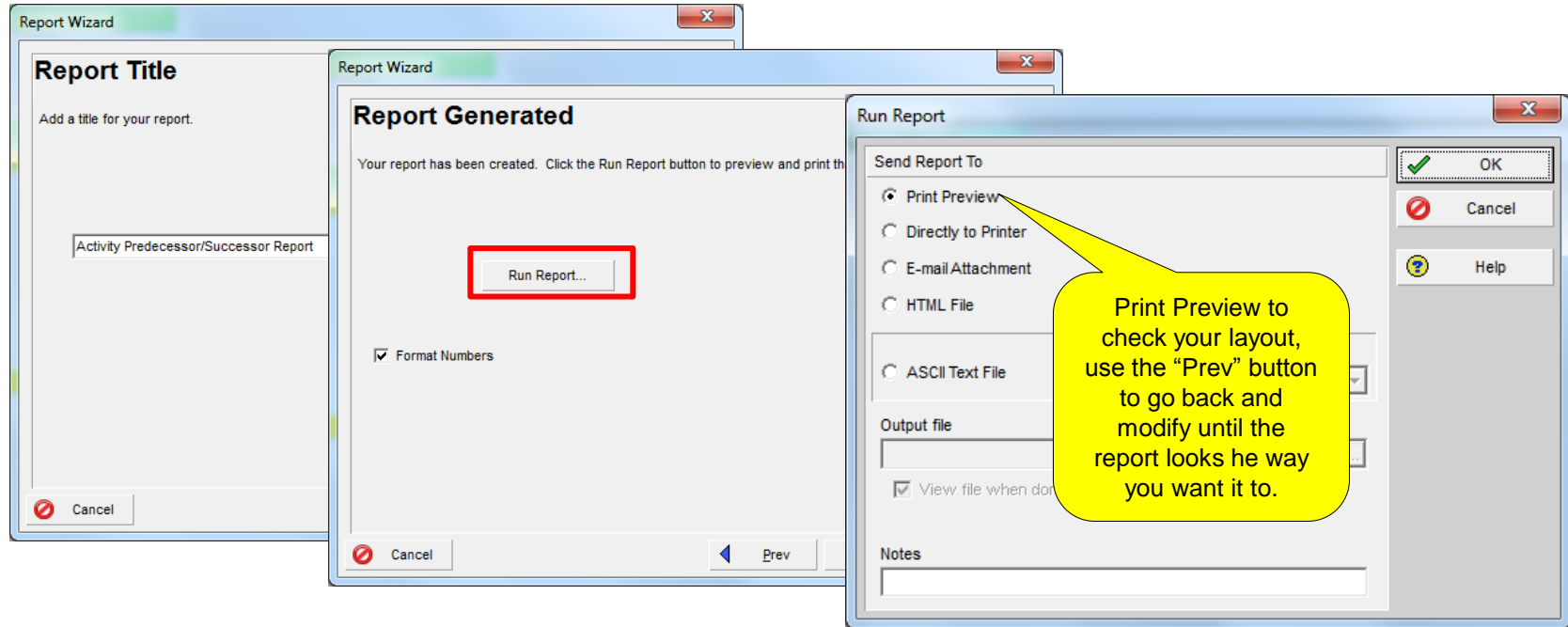
Relationship Report with the Report Wizard

Set columns for the Successor line



Relationship Report with the Report Wizard

Add a Report Title and then Run the report



Relationship Report with the Report Wizard

City Center Office Building Addition

16-Jun-14 16:34

Activity Predecessor/Successor Report

| Activity ID | Activity Name | % Compl | | | | | |
|---|---|----------------|-----------------|------------|-----------------|----------------|--------------------|
| EC1000 Design Building Addition 100% | | | | | | | |
| <u>Predecessor</u> | <u>Activity Name</u> | <u>Driving</u> | <u>Rel Type</u> | <u>Lag</u> | <u>Orig Dur</u> | | |
| EC1010 | Start Of fice Building Addition Project | Yes | FS | 0 | 0 | | |
| <u>Successor</u> | <u>Activity Name</u> | <u>Driving</u> | <u>Rel Type</u> | <u>Lag</u> | <u>Orig Dur</u> | | |
| EC1030 | Review and Approve Designs | Yes | FS | 0 | 22 | | |
| EC1010 Start Office Building Addition Project 0% | | | | | | | |
| <u>Successor</u> | <u>Activity Name</u> | <u>Driving</u> | <u>Rel Type</u> | <u>Lag</u> | <u>Orig Dur</u> | | |
| EC1000 | Design Building Addition | Yes | FS | 0 | 55 | | |
| EC1030 Review and Approve Designs 100% | | | | | | | |
| <u>Predecessor</u> | <u>Activity Name</u> | <u>Driving</u> | <u>Rel Type</u> | <u>Lag</u> | <u>Orig Dur</u> | | |
| EC1000 | Design Building Addition | Yes | FS | 0 | 55 | | |
| <u>Successor</u> | <u>Activity Name</u> | <u>Driving</u> | <u>Rel Type</u> | <u>Lag</u> | <u>Orig Dur</u> | | |
| EC1040 | Assemble Brick Samples | Yes | FS | 0 | 0 | | |
| EC1050 | Assemble Technical Data for Heat Pump | Yes | FS | 0 | 7 | | |
| EC1060 | Assemble and Submit Flooring Samples | Yes | FS | 0 | 0 | | |
| EC1090 | Begin Building Construction | Yes | FS | 0 | 0 | | |
| EC1040 Assemble Brick Samples 0% | | | | | | | |
| <u>Predecessor</u> | <u>Activity Name</u> | <u>Driving</u> | <u>Rel Type</u> | <u>Lag</u> | <u>Orig Dur</u> | <u>% Compl</u> | <u>Total Float</u> |
| EC1030 | Review and Approve Designs | Yes | FS | 0 | 22 | 100% | |
| <u>Successor</u> | <u>Activity Name</u> | <u>Driving</u> | <u>Rel Type</u> | <u>Lag</u> | <u>Orig Dur</u> | <u>% Compl</u> | <u>Total Float</u> |
| EC1070 | Review and Approve Brick Samples | Yes | FS | 0 | 30 | 100% | |

Congratula

If you save your report

Cancel

0%

0%

Report Wizard

Congratulations

If you save your report, you can rerun it later from the Reports screen, otherwise, it will be lost.

Save Report

Primavera P6 Professional R8.3.2

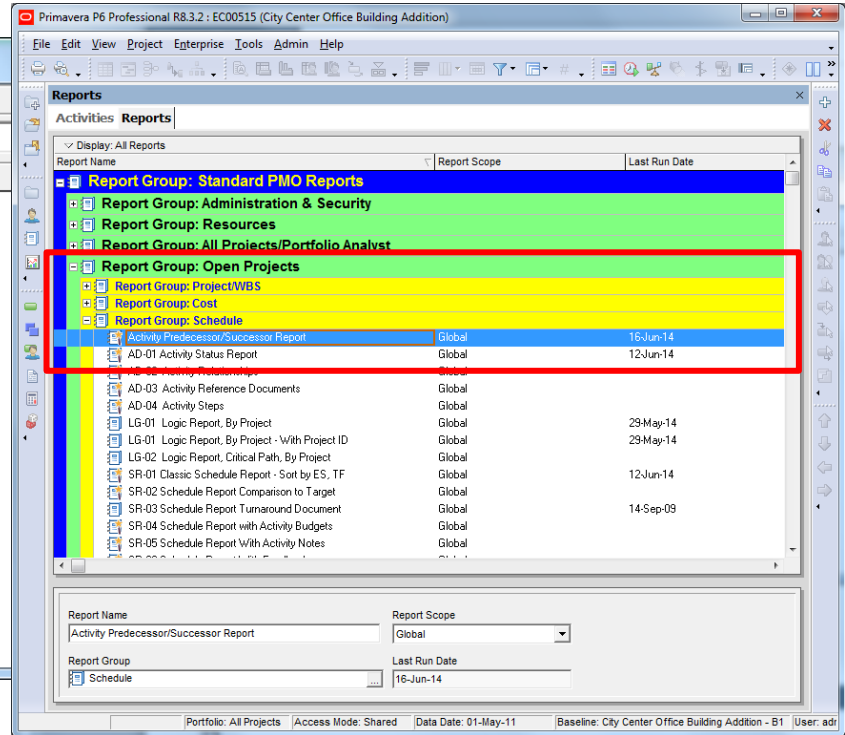
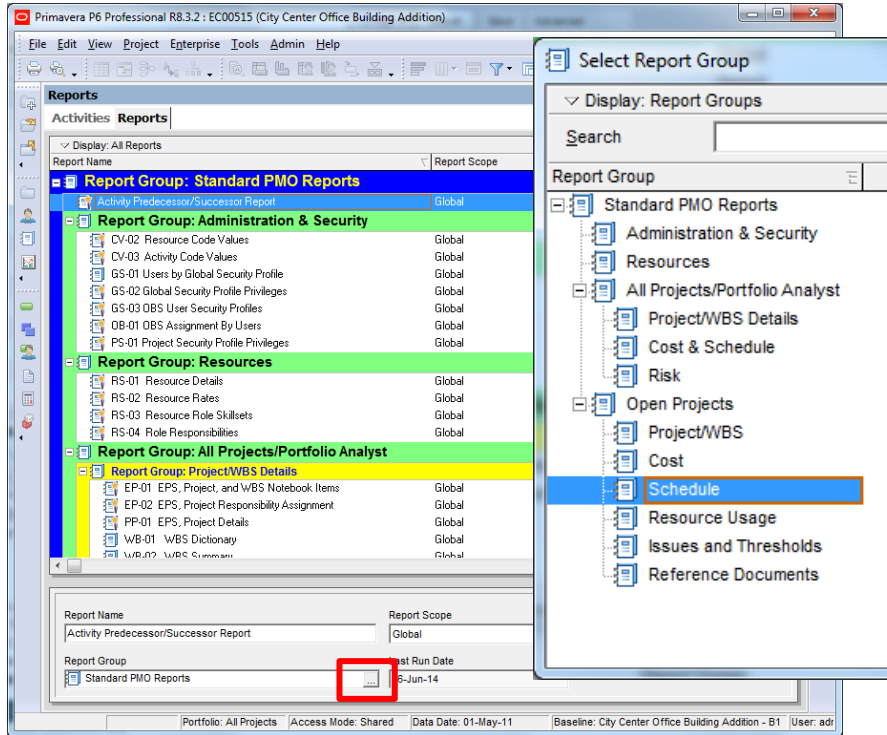
The report was saved as Activity Predecessor/Successor Report.

OK

Cancel Prev Next Finish

Assign to a Report Group

Select the new report and then click the button for Report Group



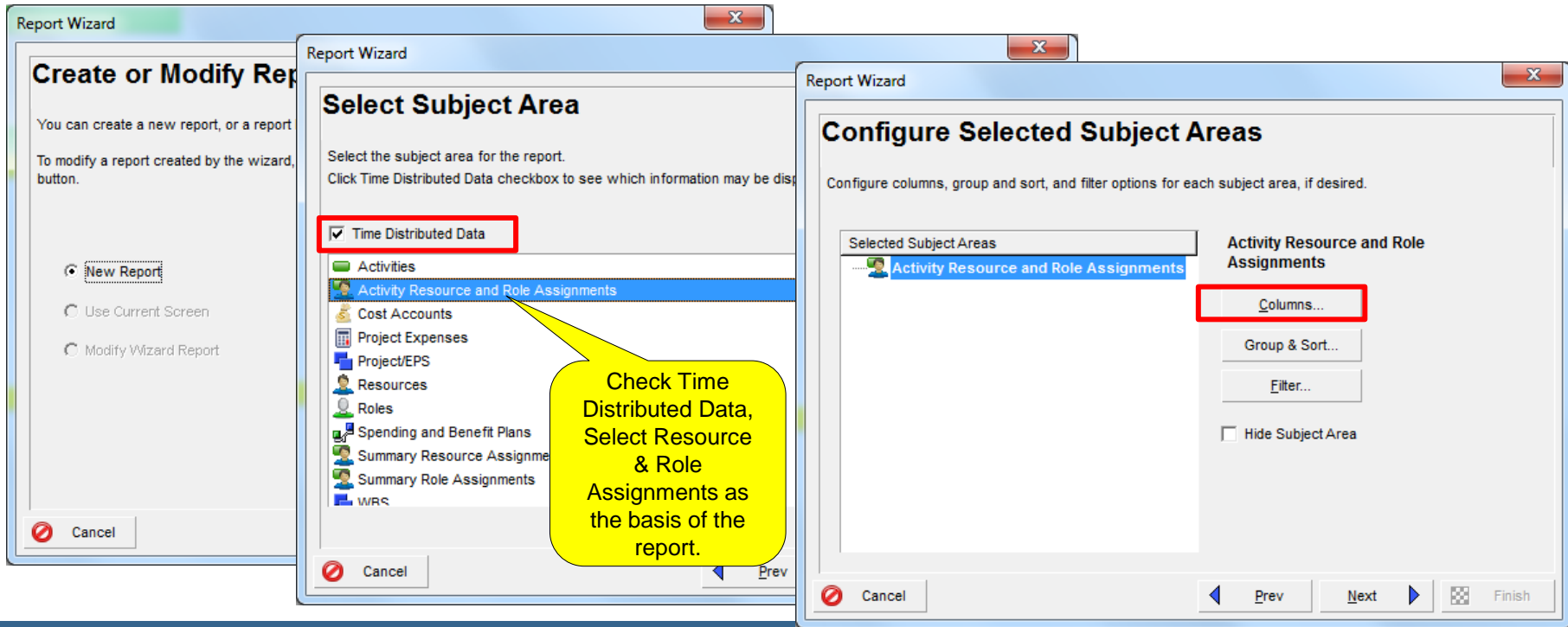
Time-Distributed Reports

The Report Wizard supports time-distributed reports

- Time –distributed reports enable you to create reports that display time-phased (Hour, Day, Week, Month, Quarter, Year) resource or cost data.
- T-D can organize and report by:
 - Activity
 - Resource/Role
 - Expense
 - EPS/Project/WBS
 - Cost Account
 - Spending and Benefit Plans

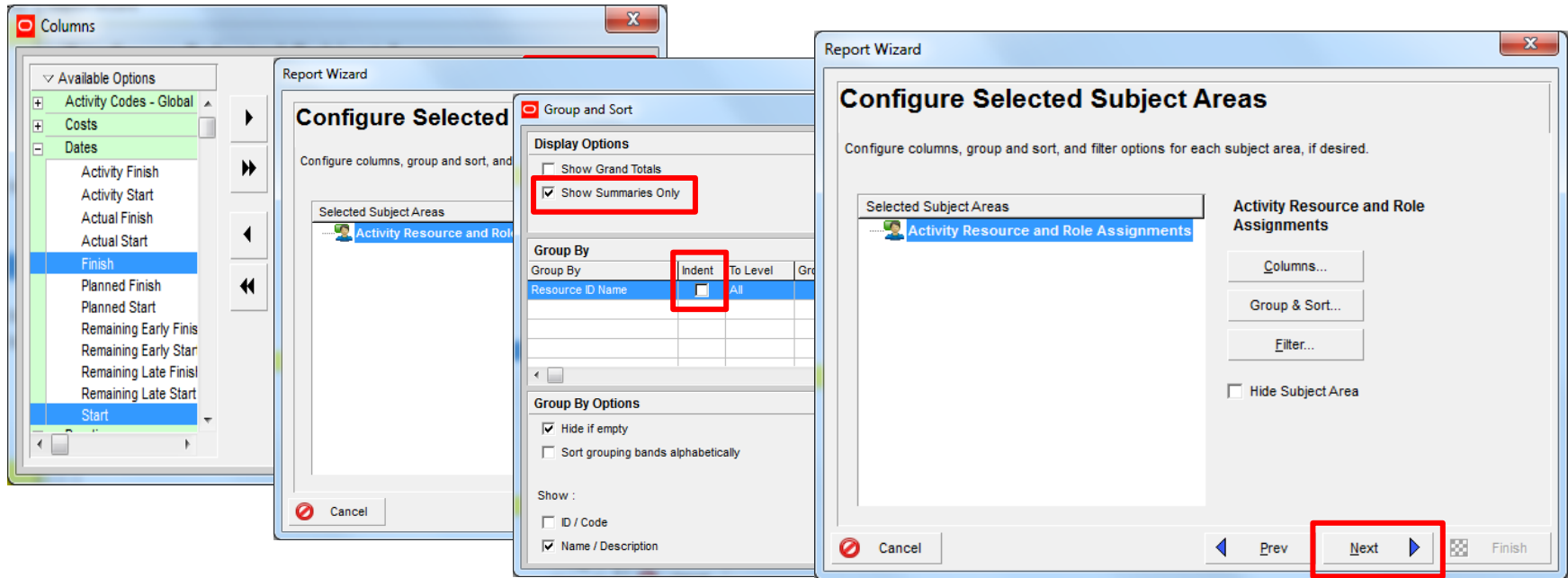
Export a Time-Distributed Report to Excel

Create a new report with the Report Wizard



Export a Time-Distributed Report to Excel

Set initial column

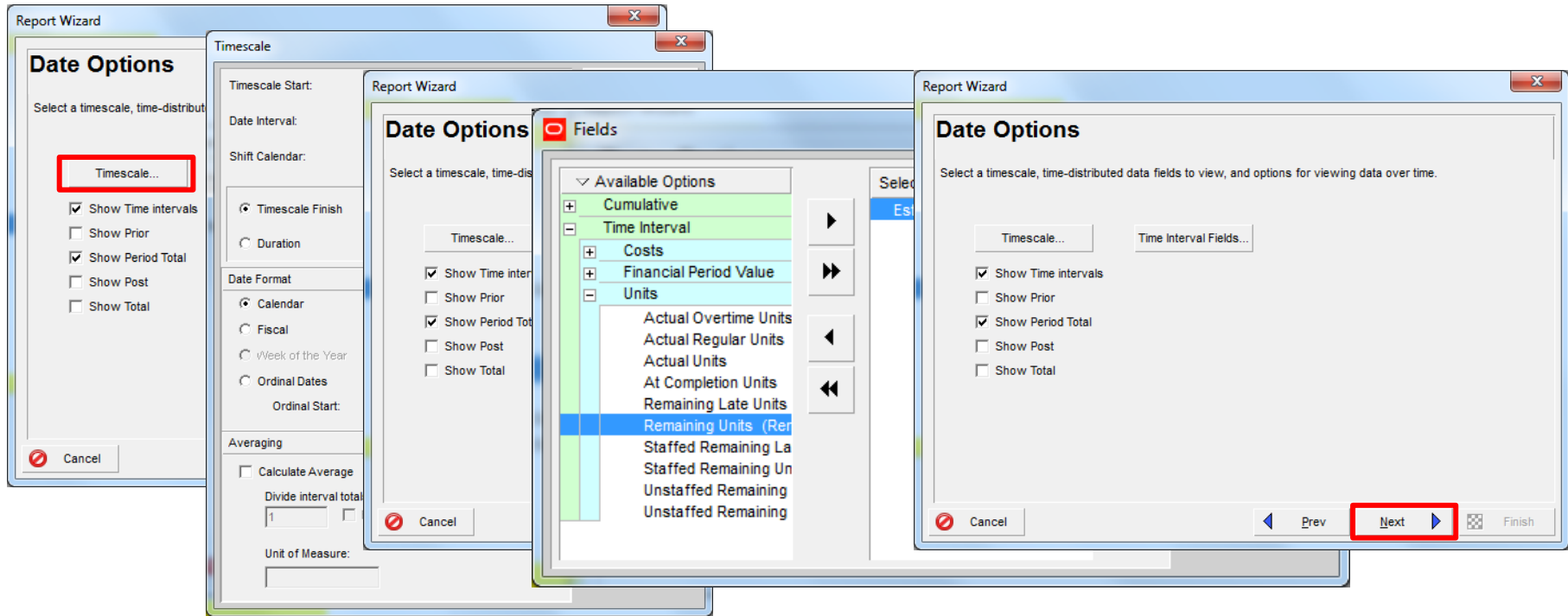


The screenshot displays three overlapping dialog boxes in a software application:

- Columns Dialog:** Located on the left, it shows a list of 'Available Options'. Under the 'Dates' category, 'Start' is selected.
- Report Wizard Dialog:** In the center, it shows the 'Configure Selected' step. The 'Display Options' section has 'Show Summaries Only' checked. The 'Group By' section shows 'Resource ID Name' with the 'Indent' checkbox checked.
- Configure Selected Subject Areas Dialog:** On the right, it shows 'Activity Resource and Role Assignments' selected under 'Selected Subject Areas'. The 'Next' button at the bottom right is highlighted with a red box.

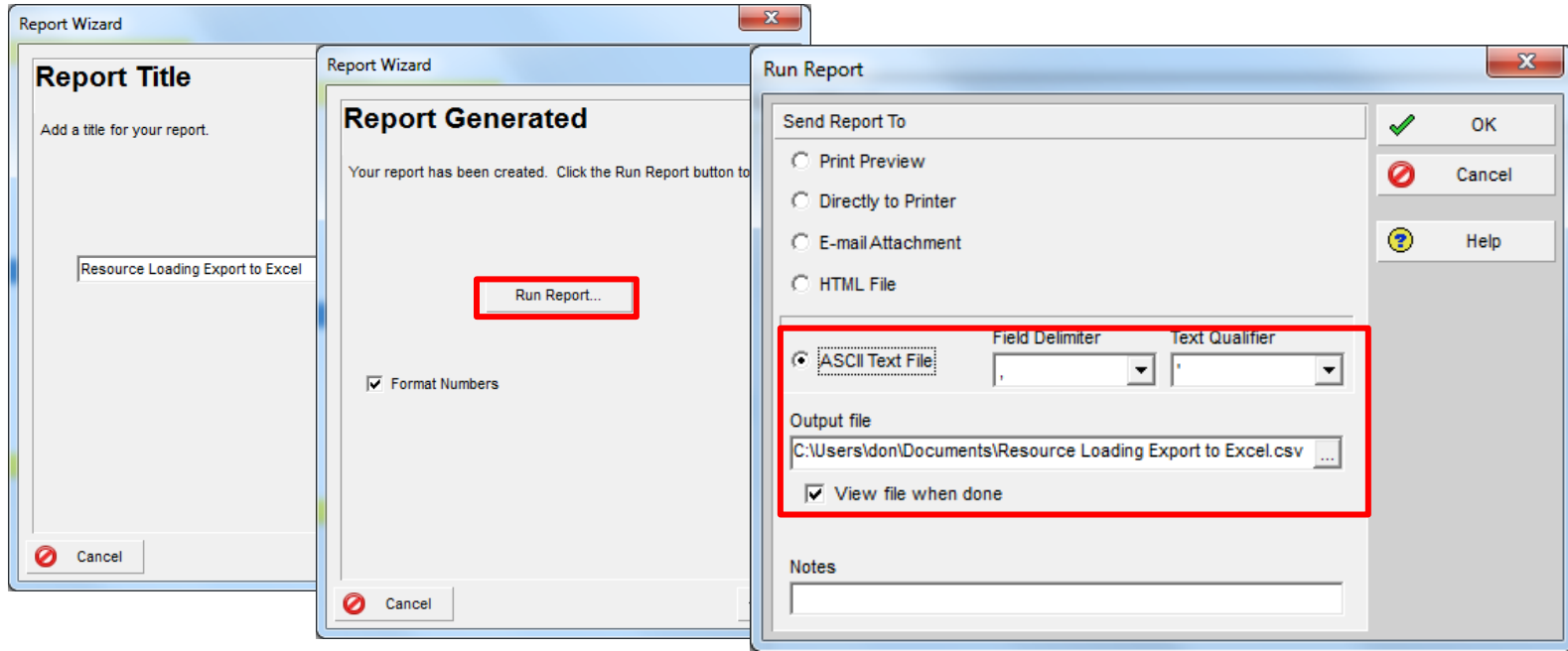
Export a Time-Distributed Report to Excel

Define Timescale and time-distributed data

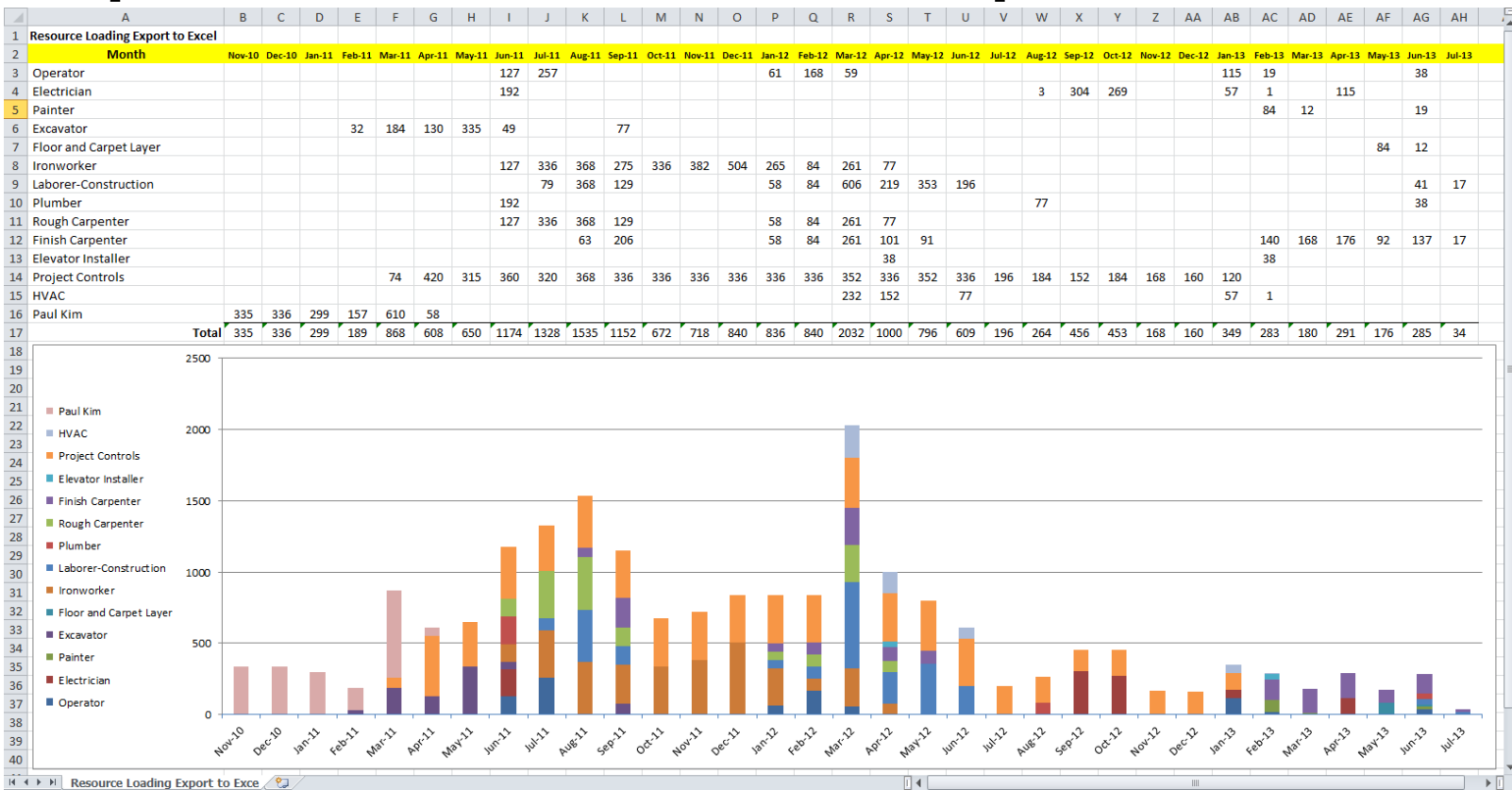


Export a Time-Distributed Report to Excel

Generate the report to an ASCII file



Export a Time-Distributed Report to Excel



Create a Report from a Layout

City Center Office Building Addition Costs - Actual 06-Jun-14 15:58

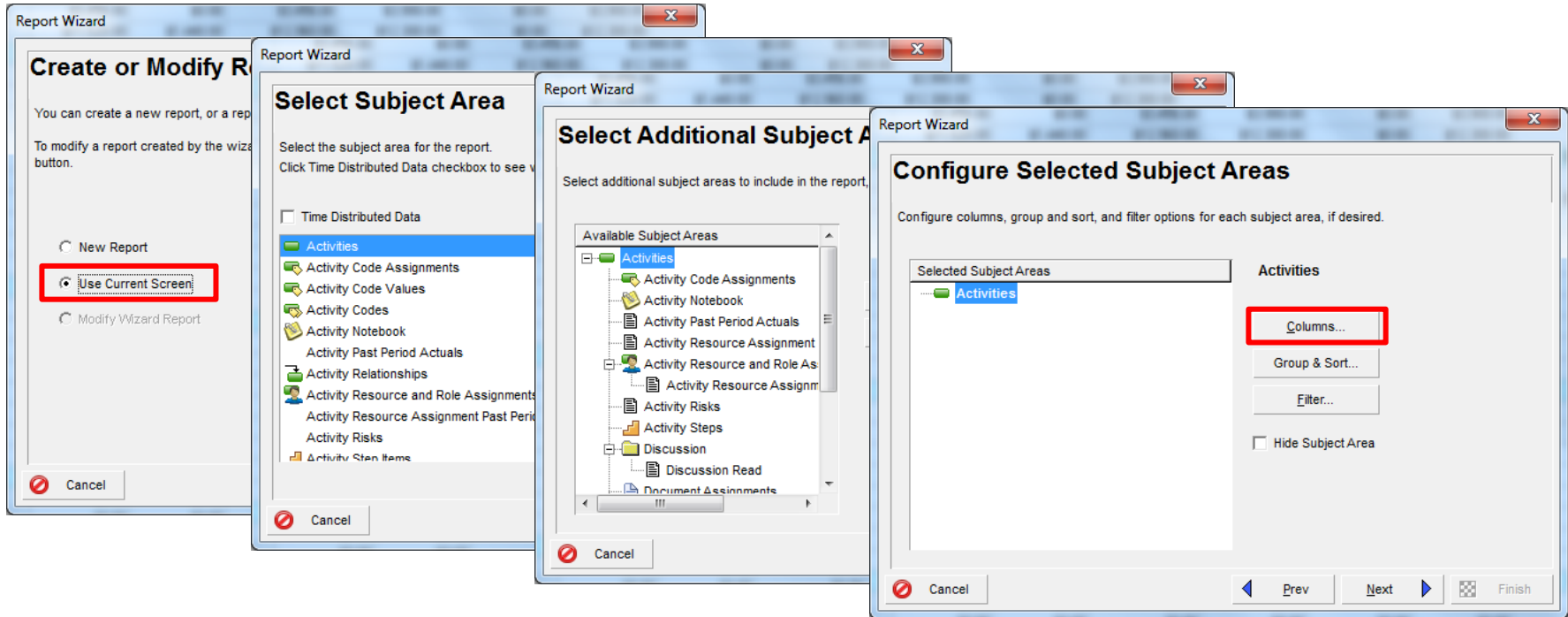
| Activity ID | Activity Name | Original Budget | Approved Changes | Current Budget | Actual Cost To Date | Estimated Remaining Cost | At Completion Total Cost | Over (+) / Under (-) at Completion |
|---------------------------|--|-----------------|------------------|----------------|---------------------|--------------------------|--------------------------|------------------------------------|
| EC00515 | | | | | \$212,023.12 | \$1,003,490.80 | \$1,215,513.92 | \$53,485.12 |
| EC00515.D&E | | | | F9 | \$117,120.00 | \$0.00 | \$117,120.00 | \$37,344.00 |
| EC 1000 | Design Building Addition | | | Shift+F9 | \$89,100.00 | \$0.00 | \$89,100.00 | \$36,108.00 |
| EC 1010 | Start Office Building Addition Project | | | | \$0.00 | \$0.00 | \$0.00 | \$0.00 |
| EC 1030 | Review and Approve Designs | | | | \$11,820.00 | \$0.00 | \$11,820.00 | \$1,452.00 |
| EC 1050 | Assemble Technical Data for Heat Pump | | | | \$3,900.00 | \$0.00 | \$3,900.00 | \$444.00 |
| EC 1160 | Review Technical Data on Heat Pump | | | | \$12,300.00 | \$0.00 | \$12,300.00 | (\$660.00) |
| EC00515.Found | | | | | \$21,350.00 | \$220,265.60 | \$241,615.60 | (\$2,842.00) |
| EC 1090 | Begin Building Construction | | | | \$0.00 | \$0.00 | \$0.00 | \$0.00 |
| EC 1100 | Site Preparation | | | | \$21,350.00 | \$0.00 | \$21,350.00 | (\$2,842.00) |
| EC 1230 | Excavation | | | | \$0.00 | \$26,880.00 | \$26,880.00 | \$0.00 |
| EC 1320 | Install Underground Water Lines | | | | \$0.00 | \$10,560.00 | \$10,560.00 | \$0.00 |
| EC 1330 | Install Underground Electric Conduit | | | | \$0.00 | \$18,240.00 | \$18,240.00 | \$0.00 |
| EC 1340 | Form/Pour Concrete Footings | | | Shift+F12 | \$0.00 | \$62,240.00 | \$62,240.00 | \$0.00 |
| EC 1350 | Concrete Foundation Walls | | | | \$0.00 | \$52,640.00 | \$52,640.00 | \$0.00 |
| EC 1360 | Form and Pour Slab | | | | \$0.00 | \$39,184.00 | \$39,184.00 | \$0.00 |
| EC 1370 | Backfill and Compact Walls | | | | \$0.00 | \$10,521.60 | \$10,521.60 | \$0.00 |
| EC 1380 | Foundation Phase Complete | | | | \$0.00 | \$0.00 | \$0.00 | \$0.00 |
| EC00515.Structure | | | | | \$0.00 | \$203,712.00 | \$203,712.00 | \$0.00 |
| EC 1390 | Erect Structural Frame | | | | \$0.00 | \$43,840.00 | \$43,840.00 | \$0.00 |
| EC 1410 | Begin Structural Phase | | | | \$0.00 | \$0.00 | \$0.00 | \$0.00 |
| EC 1420 | Floor Decking | | | | \$0.00 | \$45,472.00 | \$45,472.00 | \$0.00 |
| EC 1430 | Concrete First Floor | | | | \$0.00 | \$30,288.00 | \$30,288.00 | \$0.00 |
| EC 1460 | Erect Stairwell and Elevator Walls | | | | \$0.00 | \$6,720.00 | \$6,720.00 | \$0.00 |
| EC 1470 | Concrete Basement Slab | | | | \$0.00 | \$47,104.00 | \$47,104.00 | \$0.00 |
| EC 1480 | Concrete Second Floor | | | | \$0.00 | \$30,288.00 | \$30,288.00 | \$0.00 |
| EC 1540 | Structure Complete | | | | \$0.00 | \$0.00 | \$0.00 | \$0.00 |
| EC00515.Mechanicals | | | | | \$8,243.12 | \$321,065.60 | \$329,308.72 | \$3,227.12 |
| EC 1490 | Rough-In Phase Begins | | | | \$0.00 | \$0.00 | \$0.00 | \$0.00 |
| EC 1690 | Rough In Complete | | | | \$0.00 | \$0.00 | \$0.00 | \$0.00 |
| EC00515.Mechanicals.Lifts | | \$6,048.00 | \$2,016.00 | \$8,064.00 | \$0.00 | \$8,064.00 | \$8,064.00 | \$0.00 |
| EC 1520 | Install Elevator Rails and Equipment | \$2,016.00 | \$2,016.00 | \$4,032.00 | \$0.00 | \$4,032.00 | \$4,032.00 | \$0.00 |
| EC 1710 | Install Elevator Cab and Finishes | \$4,032.00 | \$0.00 | \$4,032.00 | \$0.00 | \$4,032.00 | \$4,032.00 | \$0.00 |
| EC00515.Mechanicals.HVAC | | \$125,568.00 | \$109,497.60 | \$235,065.60 | \$8,243.12 | \$230,049.60 | \$238,292.72 | \$3,227.12 |
| EC 1190 | Prepare and Solicit Bids for Heat Pump | \$3,168.00 | \$3,168.00 | \$6,336.00 | \$8,243.12 | \$1,320.00 | \$9,563.12 | \$3,227.12 |

© Primavera Systems, Inc. Page 1 of 6

- Report Wizard uses the current layout to format the report.
- The Report Wizard allows you to place totals at the bottom of the report.
- Use P6 Group & Sort function to organize, sort and subtotal the report.
- All elements are automatically picked up by the Report Wizard.

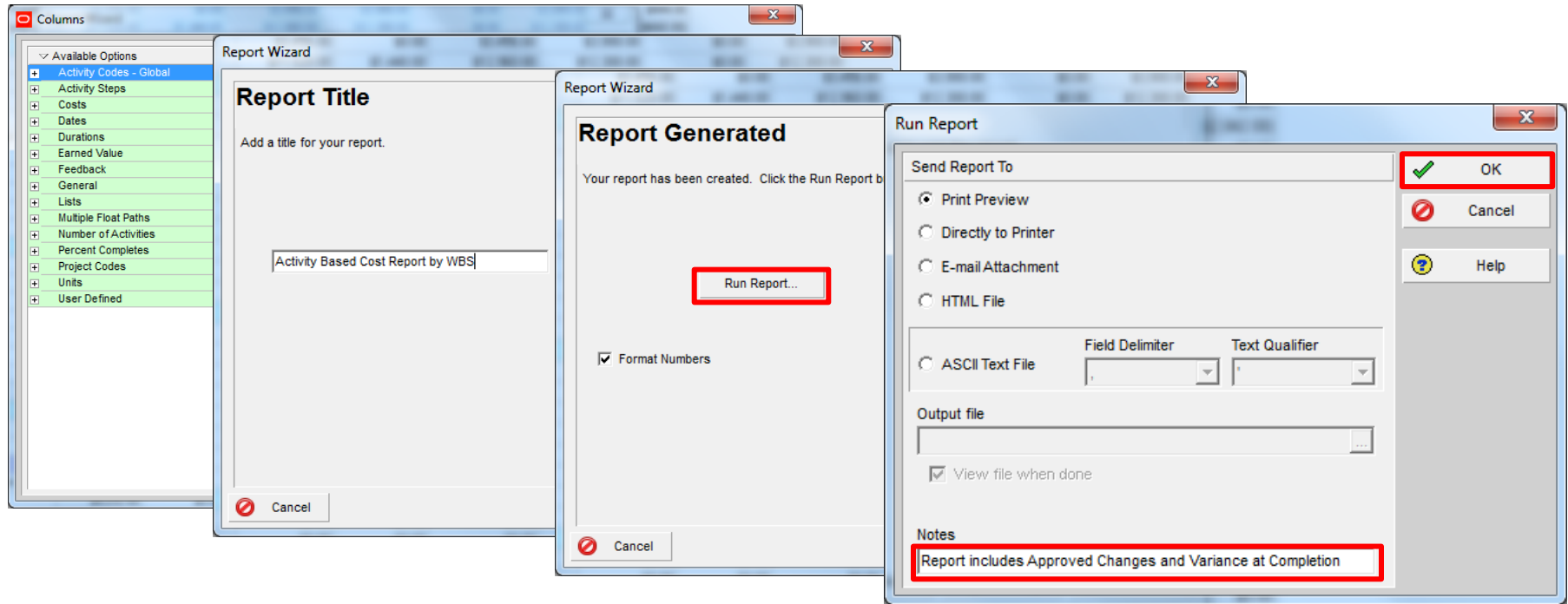
Create a Report from a Layout

The Report Wizard automatically populates a new report



Create a Report from a Layout

This is one of the quickest and easiest ways to create a new report





Create a Report from a Layout

City Center Office Building Addition

19-Jun-14 12:21

Activity Based Cost Report by WBS

Report includes Approved Changes and Variance at Completion

WBS

| Activity ID | Activity Name | Original Budget | Approved Changes | Current Budget | Actual Cost To | Estimated | At Over (+)/ Under |
|--------------------------------------|--|-----------------|------------------|----------------|----------------|-----------|--------------------|
| City Center Office Building Addition | | | | | | | |
| Design and Engineering | | | | | | | |
| EC1000 | Design Building Addition | \$20,496.00 | \$20,496.00 | \$52,992.00 | \$89 | | |
| EC1010 | Start Office Building Addition Project | \$0.00 | \$0.00 | \$0.00 | | | |
| EC1030 | Review and Approve Designs | \$10,368.00 | \$0.00 | \$10,368.00 | \$11 | | |
| EC1050 | Assemble Technical Data for Heat Pump | \$3,456.00 | \$0.00 | \$3,456.00 | \$3 | | |
| EC1180 | Review Technical Data on Heat Pumps | \$11,520.00 | \$1,440.00 | \$12,960.00 | \$12 | | |
| Subtotal | | \$51,840.00 | \$27,936.00 | \$79,776.00 | \$117 | | |
| Foundation | | | | | | | |
| EC1090 | Begin Bulking Construction | \$0.00 | \$0.00 | \$0.00 | | | |
| EC1100 | Site Preparation | \$24,192.00 | \$0.00 | \$24,192.00 | \$21 | | |
| EC1230 | Excavation | \$13,440.00 | \$13,440.00 | \$20,880.00 | | | |
| EC1320 | Install Underground Water Lines | \$5,280.00 | \$5,280.00 | \$10,560.00 | | | |
| EC1330 | Install Underground Electric Conduit | \$9,120.00 | \$9,120.00 | \$18,240.00 | | | |
| EC1340 | Form/Pour Concrete Footings | \$31,520.00 | \$30,720.00 | \$62,240.00 | | | |
| EC1350 | Concrete Foundation Walls | \$20,720.00 | \$25,920.00 | \$52,640.00 | | | |
| EC1360 | Form and Pour Slab | \$19,792.00 | \$19,392.00 | \$39,184.00 | | | |
| EC1370 | Backfill and Compact Walls | \$5,260.80 | \$5,260.80 | \$10,521.60 | | | |
| EC1380 | Foundation Phase Complete | \$0.00 | \$0.00 | \$0.00 | | | |
| Subtotal | | \$135,324.80 | \$109,132.80 | \$244,457.60 | \$21 | | |
| Structure | | | | | | | |
| EC1390 | Erect Structural Frame | \$22,720.00 | \$21,120.00 | \$43,840.00 | | | |
| EC1410 | Begin Structural Phase | \$0.00 | \$0.00 | \$0.00 | | | |

Report Wizard

Congratulations

If you save your report, you can rerun it later from the Reports screen, otherwise, it will be lost.

Save Report

Cancel

Prev

Next

Finish

© Oracle Corporation

Page 1 of 10



Tips & Tricks

Additional functionality available

- Headers & Footers
 - In Print Preview, Headers and Footers can be modified in the same way as they are in Layouts.
- Batch reports
 - Allow you to automatically print multiple reports as a complete set.
- Use custom fields for sorting & selecting
 - Text and numeric fields can be used for specific control of sorting and filtering contents of reports.

Summary

P6 Professional offers multiple report options

- Layouts, Reports, Export to Spreadsheets.
- Export to ASCII to support imports to other programs.
- The Report Wizard is the easiest, quickest and safest way to work with printed reports with P6 Professional.
- BI Publisher and other report writers expand output into graphic formats.
- P6 EPPM supports reports through Layouts, export to Excel and BI Publisher (BI Publisher is an optional, separate deployment that connects to EPPM database).



Questions

All questions are gathered into a master sheet, answered and distributed to all registrants as well as posted on our website.

Answers are based on our own experiences using the various software products related to your questions.

Thank you for participating

Contact – contact@drmcnatty.com

UPCOMING EVENTS

We participate in and support many local and national events.



www.oracle.com/openworld



<http://cmaanet.org/cmaa-national-conference-trade-show-2014>



<https://sites.google.com/site/aacesocal/symposium>

Hope to see you there!



*Proud of our Past.
Focused on our Future.*

DRMcNatty monthly e-newsletter



Get updates on the latest news,
events and upcoming webinars.

Sign up for our newsletter on our website www.drmcnatty.com

Click on "News"